

FPF LED Series

Linear non-metallic fixture for food processing

RIG-A-LITE™
An Avail Infrastructure Solutions Company



Classifications

- UL 1598 Wet Locations
- UL 8750 LED Safety
- CSA C22.2 #250.08-08
- NEMA 4X
- IP69K
- NSF Certified Food Equipment
- Non-Metallic LED Fixture
- Tested to LM 79, LM 80
- -20°C to 35°C Ambient Temperature
- 85 CRI
- Available with Emergency Battery Backup
- DLC Listed on Certain Models
- Build America, Buy America Act (BABA) Compliant
- Buy American Act (BAA) Compliant



availinfra.com/rig-a-lite

8500 Hansen Road,
Houston, TX 77075
(713) 943-0340

FPF LED Series

Linear non-metallic fixture for food processing

Key Features

- 1 Patented liquid- and debris-shedding design
- 2 Patented dual gasket seals
- 3 3' #16 AWG 3 conductor cable and cord grip
- 4 Single-bolt access to components
- 5 Field-replaceable LED circuit boards and drivers with quick disconnects
- 6 Industry leading watershed design
- 7 Impact resistant DR acrylic housing



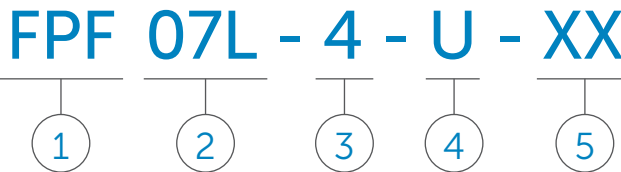
Additional Features

- Unique design tolerates high temperatures and high pressure hose down
- No flat surfaces to collect contaminants
- Non metallic, thermoplastic housing eliminates the need to utilize special shatter proof lamps
- Stainless steel external hardware and mounting
- Standard 3 ft. leads or water-tight disconnects available
- NSF Certified Food Equipment
- Polycarbonate end caps standard (stainless steel available)
- LM 79, LM 80
- Fixed mount and chain mount options
- Indoor or outdoor use
- 5 year warranty against manufacturers defect and lumen loss standard
- Minimum 50,000 hours

FPF LED Series

Linear non-metallic fixture for food processing

Catalog Number Logic



1
BASIC SERIES¹
FPF LED

2
LED MAXIMUM SYSTEM WATTAGE
04L = 33 Watt (2 foot)
07L = 65 Watt (4 foot)
14L = 130 Watt (8 foot)

3
NOMINAL FIXTURE LENGTH
2 = 2 Foot
4 = 4 Foot
8 = 8 Foot

4
VOLTAGE/FREQUENCY
U = 120 - 277V 50/60 HZ
N = 347/480V 50/60 HZ

5
OPTIONS²
F = Fuse
SS = Stainless Steel End Caps
EON = Emergency Only Operation³
ENN = Emergency and Normal Operation³
ENS = Emergency and Normal Switched³
35 = 3500k CCT (Not available in 85 CRI)
50 = 5000k CCT (Not available in 85 CRI)

¹ Fixtures are furnished with non-metallic cord grip and 3 ft. long #16 AWG 3 conductor type SOA cable.

² Consult factory for pricing.

³ Emergency option not available with 347/480V models.

Catalog logic is for explaining catalog number structure only. Not all combinations are possible; consult factory for catalog numbers not listed in charts.

Coefficients of Utilization

FPF07L4UXX

% Effective Ceiling Cavity Reflectance rcc	80				70				50			30			10			0
	70	50	30	10	70	50	30	10	50	30	10	50	30	10	50	30	10	0
% Wall Reflectance rw	70	50	30	10	70	50	30	10	50	30	10	50	30	10	50	30	10	0
Room Cavity Ratio RCR	Effective Floor Cavity Reflectance 20%																	
0	119	119	119	119	116	116	116	116	110	110	110	105	105	105	101	101	99	
1	110	106	102	98	107	103	100	97	99	96	93	95	92	90	91	89	87	85
2	101	94	88	83	98	92	86	82	88	84	80	85	81	78	82	78	76	74
3	93	84	77	71	91	82	75	70	79	73	69	76	71	67	74	70	66	64
4	86	75	67	61	84	74	67	61	71	65	60	69	64	59	67	62	58	56
5	80	68	60	54	78	67	59	54	65	58	53	63	57	52	61	56	52	50
6	74	62	54	48	72	61	53	48	59	52	47	57	51	47	56	50	46	44
7	69	57	49	43	67	56	48	43	54	47	42	53	47	42	51	46	42	40
8	65	52	44	39	63	51	44	39	50	43	38	49	42	38	47	42	38	36
9	61	48	40	35	59	47	40	35	46	39	35	45	39	35	44	38	34	33
10	57	44	37	32	56	44	37	32	43	36	32	42	36	32	41	35	31	30

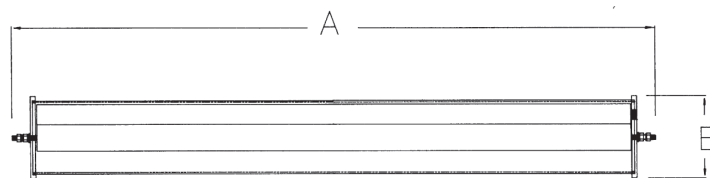
FPF LED Series

Linear non-metallic fixture for food processing

LED Series

Model	Length	Wattage	Lumens	Lumens per Watt	Comparable Fluorescent Luminaire	CRI	Operating Voltage	Ambient Temperature
FPF04L2U	2-ft	33w	4169	128	2 x 24w T5HO	86	120V - 277V 50/60 Hz	-20°C < Tamb < 40°C
FPF07L4U	4-ft	65w	8337	128	2 x 54w T5HO	86	120V - 277V 50/60 Hz	-20°C < Tamb < 35°C
FPF14L8U	8-ft	130w	16674	128	4 x 54w T5HO	86	120V - 277V 50/60 Hz	-20°C < Tamb < 35°C

Fixture Dimensions (inches)



FPF LED Series	Dimensions (inches)		Boxed Weight	Shipping Volume (Boxed Fixtures)
	A	B		
2 Foot Models	28.00	6.75	10 lbs.	1.2 cu. ft.
4 Foot Models	52.00	6.75	20 lbs.	2.1 cu. ft.
8 Foot Models	100.00	6.75	30 lbs.	4.0 cu. ft.

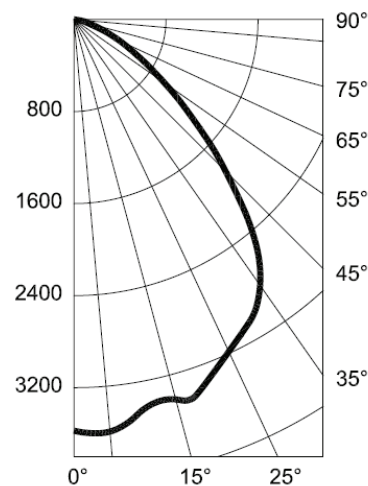
Candlepower Distribution

FPF07L4UXX

Deg.	0	22.5	45	67.5	90
0	2765	2765	2765	2765	2765
5	2765	2756	2767	2740	2800
10	2731	2714	2734	2719	2752
15	2666	2699	2688	2671	2664
20	2574	2581	2585	2576	2575
25	2454	2469	2466	2460	2455
30	2312	2300	2312	2293	2288
35	2116	2119	2094	2056	2016
40	1835	1832	1772	1705	1676
45	1505	1449	1365	1339	1331
50	1154	1075	1019	999	1022
55	830	785	743	731	780
60	593	589	552	561	637
65	398	423	405	423	436
70	264	323	328	323	315
75	195	245	259	232	215
80	94	167	180	154	143
85	38	90	99	91	89
90	0	50	61	60	59
95	0	39	51	51	50
100	0	31	43	45	45
105	0	27	37	40	41
110	0	24	31	35	37

Photometric Data

FPF07L4UXX



Total Lumens	8337
Input Power (Watts)	65
Efficacy	127.5
CCT	4115

FPF LED Series

Linear non-metallic fixture for food processing

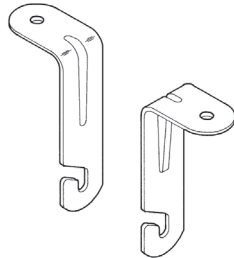
Accessories

Fixed Mounting Bracket Kit

Material:
Stainless Steel
for 3/8 in. bolts (not provided)

Catalog Number:
FPFXDMKT

Shipping Weight:
0.4 lbs.

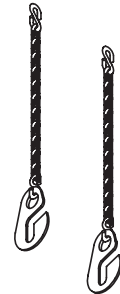


Chain Mounting Kit

Material:
Stainless Steel

Catalog Number:
FPFCMKT1

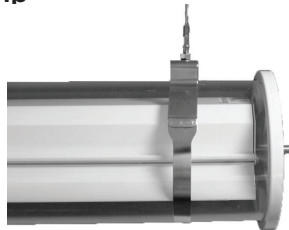
Shipping Weight:
0.2 lbs.



Stainless Steel Band Clamp

Catalog Number:
FPFBNDMKT

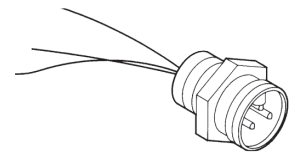
Shipping Weight:
1.0 lbs.



Mini Receptacle 3P Male

Catalog Number:
64005

Shipping Weight:
0.1 lbs.



Pigtail Assembly - 3 ft. Cable

Other Lengths Available
- Consult Factory

Catalog Number:
53108

Shipping Weight:
0.4 lbs.

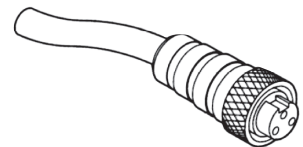


Mini Plug - 6 ft. Mini Cable

Other Lengths Available
- Consult Factory

Catalog Number:
60006

Shipping Weight:
0.6 lbs.



Polycarbonate Endcap Kit

Includes All Gaskets Glued in Place

Catalog Number:
53101

Shipping Weight:
3 lbs.



Stainless Endcap Kit

Includes All Gaskets Glued in Place

Catalog Number:
53101SS

Shipping Weight:
2.5 lbs.



An Avail Infrastructure Solutions Company

availinfra.com/rig-a-lite

8500 Hansen Road,
Houston, TX 77075
(713) 943-0340