

# BVP LED

Brass LED globe & guard lighting  
for marine environments

**RIG-A-LITE™**  
An Avail Infrastructure Solutions Company



## Classifications

- UL 1598A Marine Outside Type
- UL 1598 Wet Locations
- UL 8750 LED Safety
- CUL
- NEMA 4X
- Build America, Buy America Act (BABA) Compliant
- Buy American Act (BAA) Compliant



[availinfra.com/rig-a-lite](http://availinfra.com/rig-a-lite)

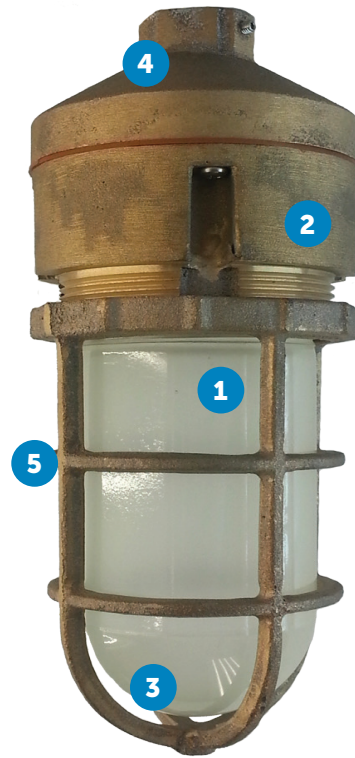
8500 Hansen Road,  
Houston, TX 77075  
(713) 943-0340

# BVP LED

## Brass LED globe & guard lighting for marine environments

### Key Features

- 1 Compact luminaire with high lumen output
- 2 Rugged 5/32" thick housing
- 3 Glare reducing frosted globe
- 4 Field replaceable LED circuit boards and drivers
- 5 Protective guard



### Additional Features

- Ceiling, pendant and wall-mounting options
- No external fins
- Optional dimming driver
- Standard 2kV surge protection
- 5-year warranty

### Standard Materials

**Body:**

Marine Brass

**Guard:**

Marine Brass

**Gaskets:**

One-Piece Silicone

**Lens:**

Borosilicate Glass

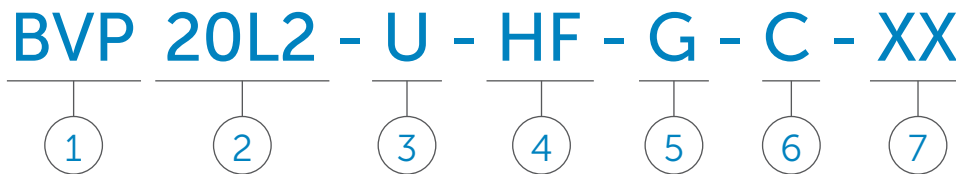
**Hardware:**

Stainless Steel

# BVP LED

## Brass LED globe & guard lighting for marine environments

### Catalog Number Logic



**1**  
**SERIES**  
BVP

**2**  
**LAMP WATTAGE & TYPE**  
20LW = 20 Watt LED (4000K)

**3**  
**BALLAST VOLTAGE**  
U = 120-277V 50/60 HZ

**4**  
**GLOBE**  
HF = Heat Resistant Frosted Glass Globe  
HRG = Heat Resistant Green Glass Globe  
HRA = Heat Resistant Amber Glass Globe  
HRB = Heat Resistant Blue Glass Globe  
HRR = Heat Resistant Red Glass Globe

**5**  
**GUARD (Required)**  
G = Guard

**6**  
**MOUNTING STYLE**  
P = Pendant  
W = Wall Mount with Box  
C = Ceiling

**7**  
**OPTIONS**  
30 = 3000K (CCT)  
35 = 3500K (CCT)  
50 = 50000 (CCT)  
E1 = 1/2" NPT Dead End  
(single hole in any location)  
E2 = 3/4" NPT Dead End  
(single hole in any location)  
C1 = 1/2" NPT Thru Feed  
(two holes on opposite sides)\*  
C2 = 3/4" NPT Thru Feed  
(two holes on opposite sides)\*  
L1 = 1/2" NPT 90° (two holes at 90° angle)\*  
L2 = 3/4" NPT 90° (two holes at 90° angle)\*  
X1 = 1/2" NPT X (all four hubs drilled)\*  
X2 = 3/4" NPT X (all four hubs drilled)\*

*\* Ceiling and Wall Mount Only*

*Catalog logic is for explaining catalog number structure only. Not all combinations are possible; consult factory for catalog numbers not listed in charts.*




### Certification Guide

Model	Mount	Wattage	Operating Voltage	Total Lumens	Lumens per Watt	CRI	CCT	Ambient Temperature	Supply Wire Suitable Temp. °C
BVP20L2LUHFG	P, C, W	20W	120V - 277V 50/60 Hz,	1769	87	83	4017	-20°C < Tamb < 25°C	90°C


# BVP LED


## Brass LED globe & guard lighting for marine environments

### Mounting

Mounting Style	Catalog Number		Shipping Weight (lbs.)
	Marine UL 1598A, UL 1598	Wet Locations UL1598	
<b>Pendant Mount</b> 	BVP20-L2-U-HF-G-P	BVPD20-L2-U-HF-G-P	7.5
<b>Ceiling Mount</b> 	BVP20-L2-U-HF-G-C	BVPD20-L2-U-HF-G-C	8.3
<b>Wall Mount</b> 	BVP20-L2-U-HF-G-W	BVPD20-L2-U-HF-G-W	14.5

### Accessories

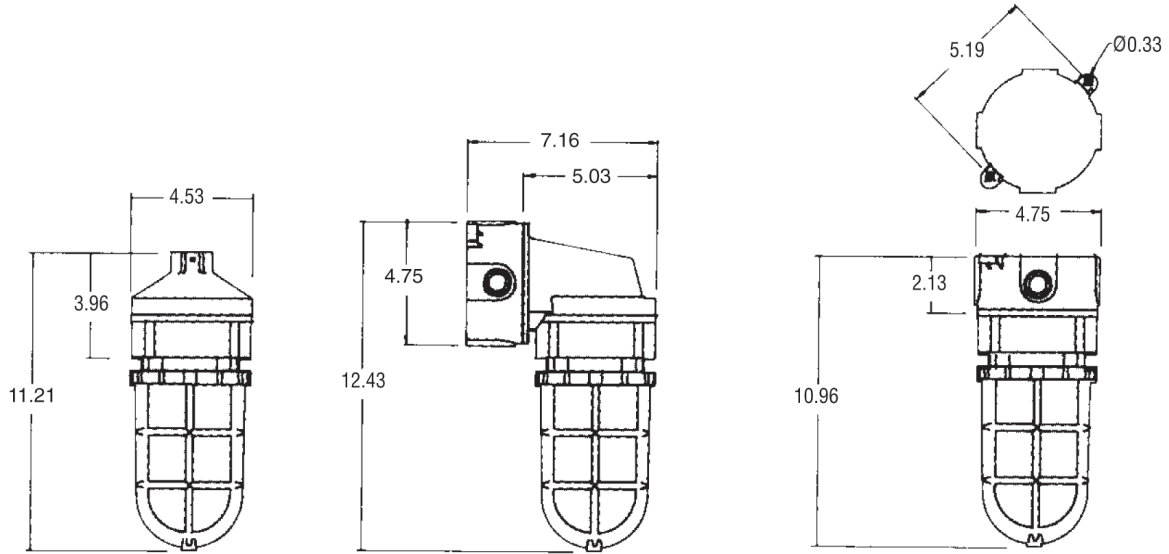
Globes	Type	Color	Thread Diameter	Catalog Number
	Heat Resistant Tempered Glass	Frosted	3-5/16 in.	VGL100HRFRSTD

Guard	Description	Catalog Number
	Cast Brass Guard	59030BR

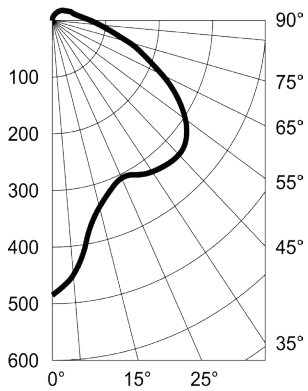
# BVP LED

Brass LED globe & guard lighting for marine environments

## Fixture Dimensions (inches)



## Photometric Data



An Avail Infrastructure Solutions Company

[availinfra.com/rig-a-lite](http://availinfra.com/rig-a-lite)

8500 Hansen Road,  
Houston, TX 77075  
(713) 943-0340