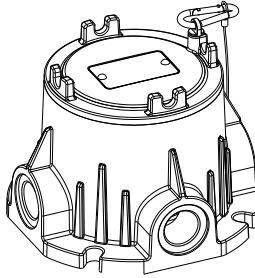


# Explosion-proof Junction Box

## Installation and Operation Instructions



8500 Hansen Rd.  
Houston, TX 77075 USA  
Tel: (713) 943-0340  
[availinfra.com/rig-a-lite/](http://availinfra.com/rig-a-lite/)



### This product comply with bellow standard:

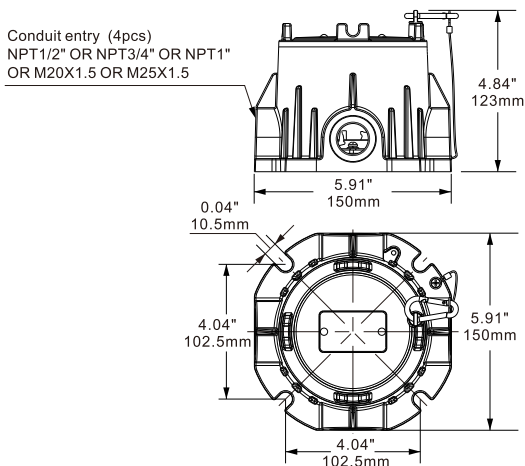
UL 50 / UL 50E / UL 508  
UL1203  
UL121201  
C22.2 No. 94.1 / C22.2 No. 94.2  
C22.2 No.25 / C22.2 No. 14  
C22.2 No.30  
C22.2 No.213  
CSA/UL 60079-0  
CSA/UL 60079-1  
CSA/UL 60079-13

### Certifications:

Class I, Division 1, Group A, B, C, D T6  
Class I, Division 2, Group A, B, C, D T4A  
Class II, Division 1, Group E, F, G  
Class II, Division 2, Group F, G  
Class III  
Ex db IIC T6 Gb  
Ex tb IIIC T80°C Db  
Zone 1, AEx db IIC T6 Gb  
Zone 21, AEx tb IIIC T80°C Db  
Type 4X IP66

**Typical application sites are:** Chemical plant, oil and gas refineries, drilling rigs, petrochemical facilities, pulp and paper plant, foundries, waste and sewage treatment plant, pharmaceutical plant, mining, power generation, paint spray booths and where flammable vapors, gases, ignitable dusts, fibers or flying are present.

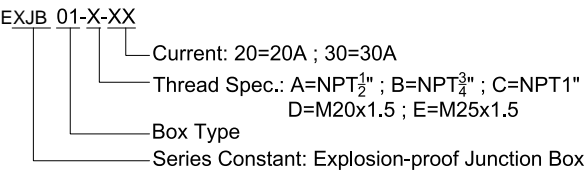
### Physical Dimensions (Unit: mm/inch)



Product Specifications

|  |                                  |
|--|----------------------------------|
| Model                                    | EXJB01-X-XX                      |
| Max. Voltage (V)                         | 550                              |
| Max. Current (A)                         | 20, 30                           |
| Terminal size (mm²)                      | 2.5, 4                           |
| Max. Conductor cross section [mm²] (AWG) | 4 (12), 6 (10)                   |
| Outlook Dimensions mm (inch)             | 150x150x123 (5.91"x5.91"x4.84")  |
| Working Temperature                      | -60°C to +70°C (-76°F to +158°F) |
| Storing Temperature                      | -60°C to +70°C (-76°F to +158°F) |

Model description



Installation and Operation Instructions

Dear Customers and Users:

Thank you very much for purchasing our product. In order to better understand how to use this product safely, please read this instruction patiently and carefully. And please keep the manual properly for future reference.

Warnings:

1. DO NOT dismantle, modify or replace any internal electronic components. If you have any confusion during installation, please contact local dealer or contact us directly.
2. Please be sure to turn off the power before installation, maintenance or any other actions that may touch the Junction Box<sup>1</sup>.
3. DO NOT install the product on the surface that is easy to be damaged and deformed.
4. Under no circumstances can this product be covered with thermal insulation or any other similar materials.
5. If emergency or abnormality occurs, please cut off the power firstly and contact your local dealer as soon as possible.
6. The product is suitable for both indoor and outdoor use.
7. Any installation and maintenance must be performed by certified electricians only.
8. Do not open the enclosure when the product is working.

Safety Installation Guides

It's very important to cut off the power before removing the fixtures. Also, installer needs to be a qualified electrician.

● On-site installing

This manual is to provide the user with professional installation information, because the product is used in dangerous areas, so the qualified electrician is required. The inlet screw is NPT thread or metric thread (See the nameplate for details), cable entry must be installed with certified cable gland or blanking plug.

● Use and setting-up

All wires need to be tested for proper connection and safe installation before use. In order to avoid the risk of electrical damage and installation safety problem, these jobs must be performed by a qualified electrician.

● Assembling and dismantling

Installer needs to read the instruction carefully before processing the assembling. Please feel free to contact the manufacturer if there is confusion during the installation.

### ● Training instructions for a safe use

Regards the wiring diagram please refers to installation detailed instruction below. Normally, brown (or black) wire connects to live wire, blue (or white) to nature wire, green with yellow (or green) strips to the grounding.

CAUTION: FOR CLASS I, DIVISION 1 SEAL ENTRIES WITHIN 450mm.

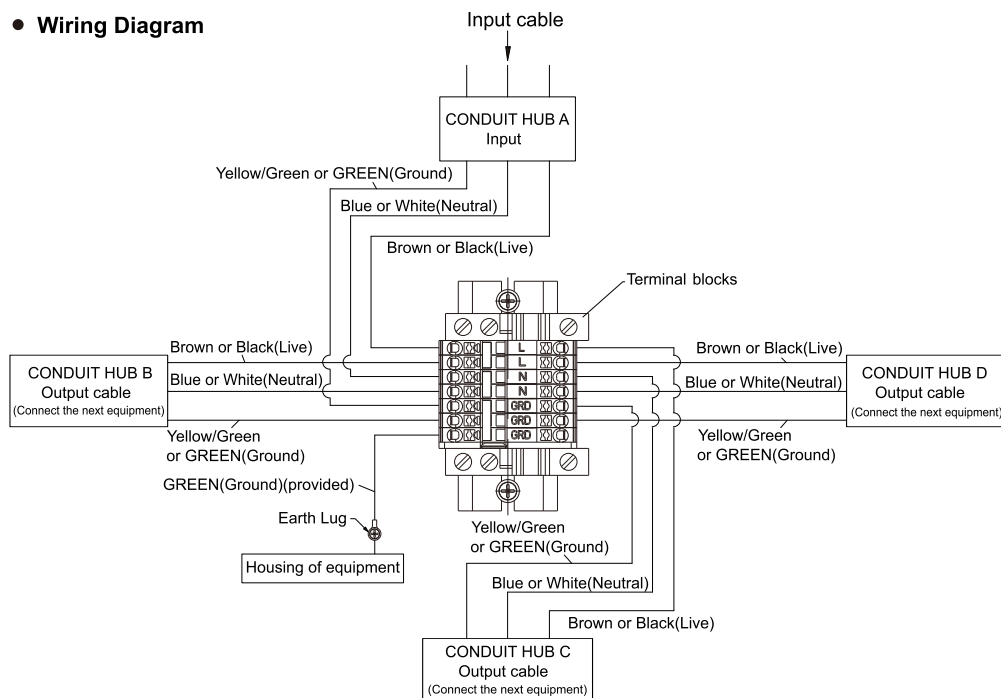
ATTENTION : POUR LA CLASSE I, DIVISION 1, SCELLER LES ENTRÉES DANS UN MÊME 450 mm.

CAUTION: To Reduce The Risk Of Ignition Of Hazardous Atmospheres, Disconnect The Junction Box From The Supply Circuit Before Opening. Keep Tightly Closed When In Operation.

ATTENTION : Pour réduire le risque d'inflammation d'atmosphères dangereuses, débranchez la boîte de jonction du circuit d'alimentation avant de l'ouvrir. Gardez-la bien fermée lors du fonctionnement.

## Mounting of product

### ● Wiring Diagram



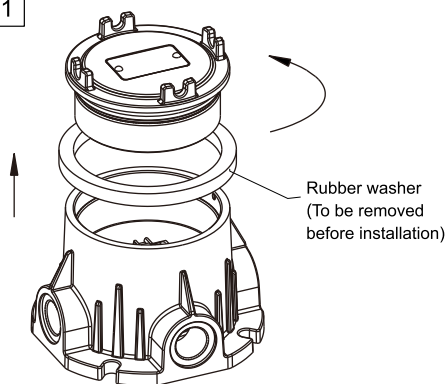
**Table 1**

| Terminal size      | Max. Voltage | Max. Current | Max. Conductor cross section | Max. Number of terminals | Max. Number of cable cores |
|--------------------|--------------|--------------|------------------------------|--------------------------|----------------------------|
| 2.5mm <sup>2</sup> | 550V         | 20A          | 4 mm <sup>2</sup> (12AWG)    | 7                        | 3                          |
| 2.5mm <sup>2</sup> | 550V         | 20A          | 4 mm <sup>2</sup> (12AWG)    | 8                        | 4                          |
| 4mm <sup>2</sup>   | 550V         | 30A          | 6 mm <sup>2</sup> (10AWG)    | 6                        | 3                          |
| 4mm <sup>2</sup>   | 550V         | 30A          | 6 mm <sup>2</sup> (10AWG)    | 8                        | 4                          |

#### Note:

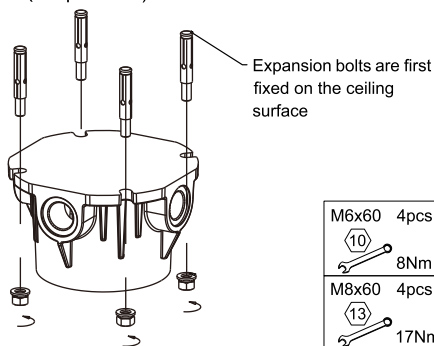
1. Select the cable that matches the terminal block according to Table 1.
2. The working current of the conductor is in accordance with Table 45.3 of UL508.
3. CONDUIT HUB B, C, and D can be used for Interconnect equipment. When not in use, they should be plugged with plugs.
4. This wiring diagram is a typical wiring diagram of the junction box. Customers can conduct wiring according to the local electrical regulations according to the number of terminals.

1

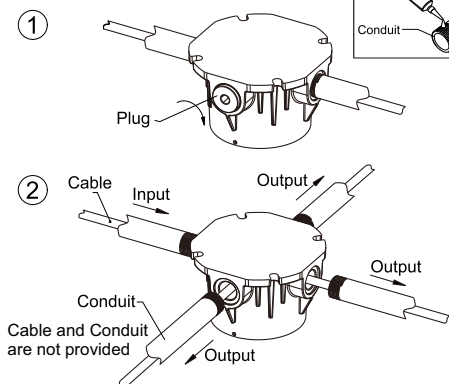


2

Recommended  
Expansion bolts: M6x60 or M8x60  
(not provided)

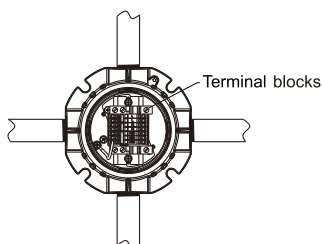


3



- ⚠ 1. Please remove the unwanted plugs (if any) when adopting loop-in and loop-out connections.  
2. Customers can determine the specific entry and exit line locations according to their needs.

3



⚠ In compliance with local electrical codes, refer to the wiring diagram for wiring.

### ⚠ Notice:

- Min 90°C Supply Conductors
- Corrosion inhibiting grease, such as high and low temperature grease 7017-1B, may be applied to joint surfaces before assembly. It does not harden because of aging, does not contain evaporating solvent and does not cause corrosion of joint surfaces.
- The protection level of conduit and the luminaire is above IP66.
- Conduit opening should be blocked with plugs when not in use.

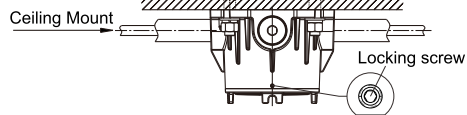
4

1

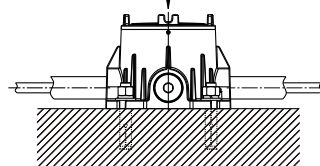
Please tighten the conduit and plug (if there are any) to make sure the fixture is IP66

CAUTION: FOR CLASS I,  
DIVISION 1 SEAL ENTRIES  
WITHIN 450mm.

2



Seat Type Mount



Wall Mount

