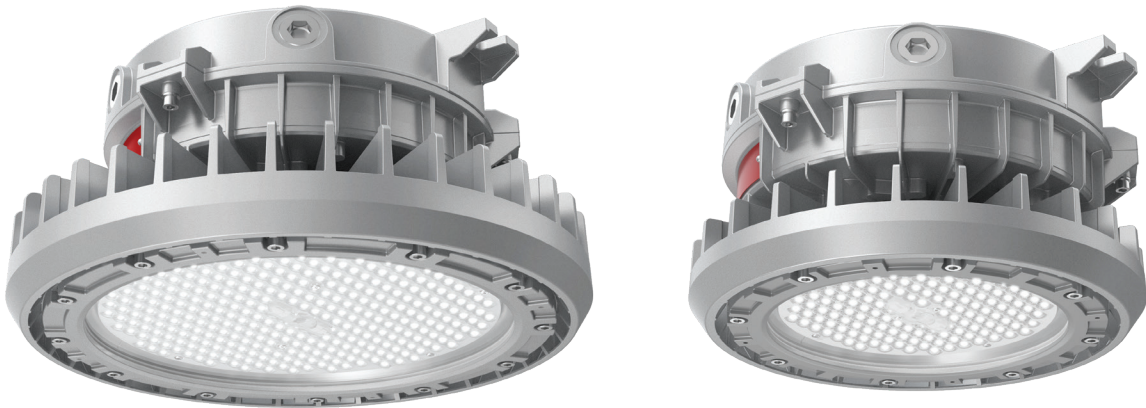


EXA05 LED

Explosion-proof LED luminaires for hazardous-rated locations

RIG-A-LITE™
An Avail Infrastructure Solutions Company



EX-SERIES

Globally certified protection for hazardous environments

The RIG-A-LITE EX-Series meets IECEx and ATEX standards, providing compliance, durability, and safety for hazardous locations. Designed for the Middle East, North Africa, Southeast Asia, and other ATEX/IECEx-certified regions, the EX-Series delivers reliable performance in extreme conditions.

Classifications

- Class I, Division 2, Groups A, B, C, & D
- Class II, Division 1, Groups E, F & G
- Class II, Division 2, F & G
- Class III
- UL 844 Hazardous Locations
- UL 1598A Marine Outside Type
- IK08
- IP66

IECEx

- Ex nR IIC T6/T5 Gc
- Ex tb IIIC T80 C/T95 C Db IP66

ATEX

- II 3G Ex nR IIC T6/T5 Gc
- II 2D Ex tb IIIC T80 C/T95 C Db IP66



availinfra.com/rig-a-lite

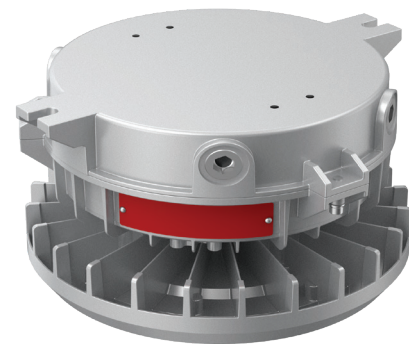
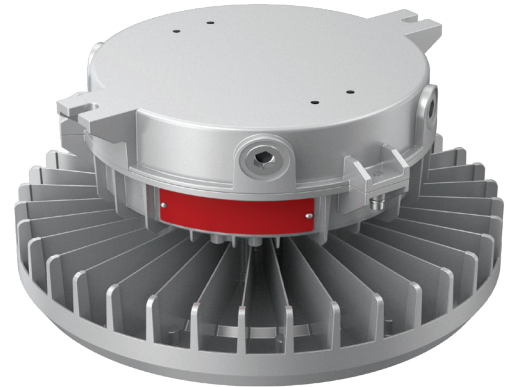
8500 Hansen Road
Houston, TX 77075
(713) 943-0340

EXA05 LED

Explosion-proof LED luminaires for hazardous-rated locations

Key Features

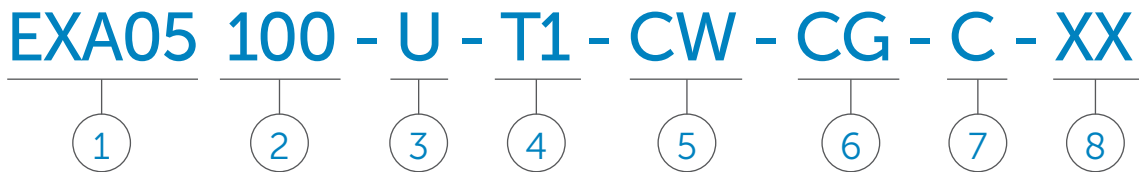
- Available in 30W, 50W, 75W, 100W, 120W, 150W, 180W, 200W, 240W
- Input voltage: AC100-277V, AC 277-480V (50/60Hz)
- Pendant, ceiling, wall, trunnion, 25° stanchion, and 90° stanchion mounting options
- Type I, III, and V light distribution options
- Max operating temperature range: -40°C to 65°C
- Optional stainless steel guard
- Flip-type structure for easy access to internal components
- Die-cast aluminum body and frame
- Corrosion resistant, rugged construction ensures long life and safe operation
- Provides up to 1620 lumens illumination for 90 minutes or 720 lumens illumination for 3 hours of emergency lighting



EXA05 LED

Explosion-proof LED luminaires for hazardous-rated locations

Catalog Number Logic



1

BASIC LUMINAIRE

EXA05 = ATEX & IECEx Standards

2

LUMENS/WATTS

030 = 4,200 Lumens / 30 Watts
050 = 7,000 Lumens / 50 Watts
075 = 10,500 Lumens / 75 Watts
100 = 14,000 Lumens / 100 Watts
120 = 16,800 Lumens / 120 Watts
150 = 21,000 Lumens / 150 Watts
180 = 25,200 Lumens / 180 Watts
200 = 28,000 Lumens / 200 Watts
240 = 33,600 Lumens / 240 Watts

3

VOLTAGE

U = 100-277V 50/60HZ
N = 347-480V 60HZ

4

OPTICS

T1 = Type I (30W-100W)
T3 = Type III (30W-100W)
T5 = Type V (30W-100W)
T1 = Type I (120W-240W)
T3 = Type III (120W-240W)
T5 = Type V (120W-240W)

5

COLOR TEMPERATURE

WW = 2000K (Warm white)
SW = 3000K (Soft white)
NW = 4000K (Natural white)
CW = 5000K (Cool white)
CD = 6500K (Cool daylight)
RE = Red
GR = Green
BL = Blue
AM = Amber

6

LENS

CG = Clear glass

7

MOUNTING STYLE

P = Pendant mount
T = Trunnion mount
C = Ceiling mount
W = Wall mount
S = 25° Stanchion mount
V = 90° Stanchion mount

8

OPTIONS

WG = Wire guard
GS = Glare shield
EM = Emergency battery
DM = Dimmable

EXA05 LED

Explosion-proof LED luminaires for hazardous-rated locations

Certification Guide

Model	Watts	Operating Voltage	Total Lumens ¹	Lumens per Watt ¹	CRI ¹	CCT ¹	Ambient Temperature ¹	Gas ExnR	Dust Exyb	Supply Wire Suitable Temperature, °C
EXA05-030	30W	100-277V 50/60HZ	4200	140.0	70	5000K	-40°C < Tamb < 65°C	T5	95°C	90°C
EXA05-050	50W	100-277V 50/60HZ	7000	140.0	70	5000K	-40°C < Tamb < 60°C	T6	80°C	90°C
EXA05-075	75W	100-277V 50/60HZ	10500	140.0	70	5000K	-40°C < Tamb < 60°C	T5	95°C	90°C
EXA05-100	100W	100-277V 50/60HZ	14000	140.0	70	5000K	-40°C < Tamb < 50°C	T6	80°C	90°C
EXA05-120	120W	100-277V 50/60HZ	16800	140.0	70	5000K	-40°C < Tamb < 65°C	T5	95°C	90°C
EXA05-150	150W	100-277V 50/60HZ	21000	140.0	70	5000K	-40°C < Tamb < 55°C	T6	80°C	90°C
EXA05-180	180W	100-277V 50/60HZ	25200	140.0	70	5000K	-40°C < Tamb < 45°C	T5	95°C	90°C
EXA05-200	200W	100-277V 50/60HZ	28000	140.0	70	5000K	-40°C < Tamb < 45°C	T5	95°C	90°C
EXA05-240	240W	100-277V 50/60HZ	33600	140.0	70	5000K	-40°C < Tamb < 45°C	T5	95°C	90°C
EXA05-050EM	50W	100-277V 50/60HZ	7000	140.0	70	5000K	0°C < Tamb < 50°C	T6	80°C	90°C

¹ When GS, WG, color LEDs or optics options are selected, total lumens, lumens per watt, CRI, CCT, or ambient temperature may change. Consult factory for values.

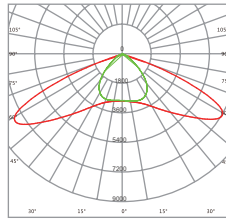
EXA05 LED

Explosion-proof LED luminaires for hazardous-rated locations

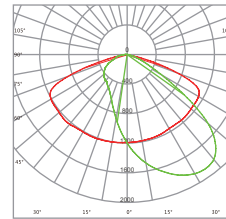
Photometric Data

30W-100W
Beam Angle

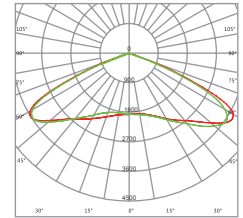
60°



Type III

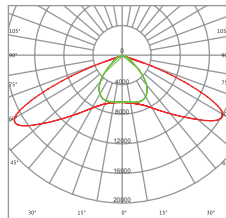


Type V

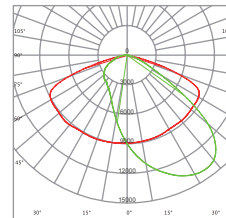


120W-240W
Beam Angle

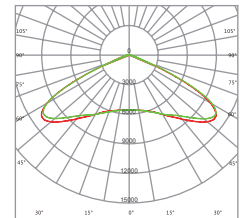
Type I



Type III



Type V



EXA05 LED

Explosion-proof LED luminaires for hazardous-rated locations

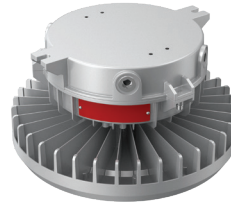
Mounting Options

Pendant Mount: P



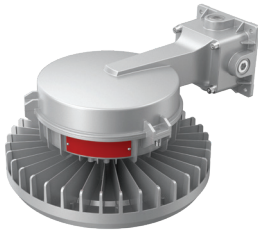
Fixture	Weight
EXA05-030	13.45 lbs.
EXA05-050	13.45 lbs.
EXA05-075	13.45 lbs.
EXA05-100	13.45 lbs.
EXA05-120	20.72 lbs.
EXA05-150	20.72 lbs.
EXA05-180	20.72 lbs.
EXA05-200	20.72 lbs.
EXA05-240	20.72 lbs.

Ceiling Mount: C



Fixture	Weight
EXA05-030	14.33 lbs.
EXA05-050	14.33 lbs.
EXA05-075	14.33 lbs.
EXA05-100	14.33 lbs.
EXA05-120	21.38 lbs.
EXA05-150	21.38 lbs.
EXA05-180	21.38 lbs.
EXA05-200	21.38 lbs.
EXA05-240	21.38 lbs.

Wall Mount: W



Fixture	Weight
EXA05-030	18.74 lbs.
EXA05-050	18.74 lbs.
EXA05-075	18.74 lbs.
EXA05-100	18.74 lbs.
EXA05-120	25.79 lbs.
EXA05-150	25.79 lbs.
EXA05-180	25.79 lbs.
EXA05-200	25.79 lbs.
EXA05-240	25.79 lbs.

Trunion Mount: T



Fixture	Weight
EXA05-030	17.86 lbs.
EXA05-050	17.86 lbs.
EXA05-075	17.86 lbs.
EXA05-100	17.86 lbs.
EXA05-120	24.91 lbs.
EXA05-150	24.91 lbs.
EXA05-180	24.91 lbs.
EXA05-200	24.91 lbs.
EXA05-240	24.91 lbs.

25° Stanchion Mount: S



Fixture	Weight
EXA05-030	16.76 lbs.
EXA05-050	16.76 lbs.
EXA05-075	16.76 lbs.
EXA05-100	16.76 lbs.
EXA05-120	23.80 lbs.
EXA05-150	23.80 lbs.
EXA05-180	23.80 lbs.
EXA05-200	23.80 lbs.
EXA05-240	23.80 lbs.

90° Stanchion Mount: V


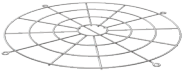


Fixture	Weight
EXA05-030	17.20 lbs.
EXA05-050	17.20 lbs.
EXA05-075	17.20 lbs.
EXA05-100	17.20 lbs.
EXA05-120	24.47 lbs.
EXA05-150	24.47 lbs.
EXA05-180	24.47 lbs.
EXA05-200	24.47 lbs.
EXA05-240	24.47 lbs.

EXA05 LED

Explosion-proof LED luminaires for hazardous-rated locations

Accessories

	Catalog No.	Size (in.)	Shipping Weight (lbs.)
Wire Guard (small) 	BC-EXA05-01	9.29" Dia. x 0.12"	0.28 lbs.
Wire Guard (large) 	BC-EXA05-02	12.56" Dia. x 0.24"	0.48 lbs.



An Avail Infrastructure Solutions Company

availinfra.com/rig-a-lite

8500 Hansen Road
Houston, TX 77075
(713) 943-0340