

EXA03 LED

Explosion-proof LED high-bay lighting for hazardous-rated locations

RIG-A-LITE™
An Avail Infrastructure Solutions Company



EX-SERIES

Globally certified protection for hazardous environments

The RIG-A-LITE EX-Series meets IECEx and ATEX standards, providing compliance, durability, and safety for hazardous locations. Designed for the Middle East, North Africa, Southeast Asia, and other ATEX/IECEx-certified regions, the EX-Series delivers reliable performance in extreme conditions.

Classifications

- Class I, Division 1, Groups B, C & D
- Class II, Division 1, Groups E, F & G
- Class II, Division 2, Groups F & G
- Class I Zone 1, Group IIB plus hydrogen
- Class I Zone 2, Group IIB plus hydrogen
- Zone 20, 21
- Zone 22
- UL 1598A Marine Outside Type
- IK10
- IP66

IECEx

- Ex db IIC T6/T5 Gb
- Ex tb IIIC T80 C/T95 C Db IP66

ATEX

- II 2G Ex db IIC T6/T5 Gb
- II 2D Ex tb IIIC T80 C/T95 C Db IP66



availinfra.com/rig-a-lite

8500 Hansen Road
Houston, TX 77075
(713) 943-0340

EXA03 LED

Explosion-proof LED high-bay lighting for hazardous-rated locations

Key Features

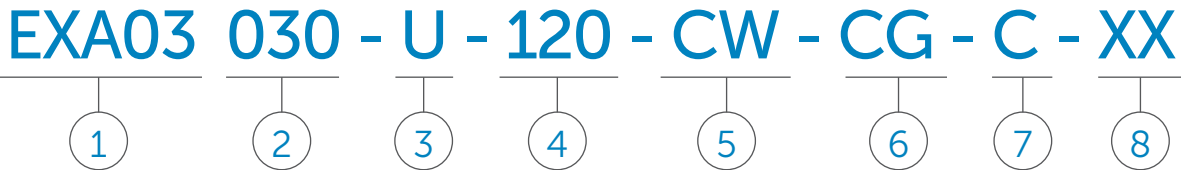
- Available in 30W, 40W, 50W, 60W, 70W
- Input voltage: AC100-277V, optional AC 277-480V
- Pendant, ceiling, wall, trunnion, 25° stanchion mounting options
- 120° beam angle
- Max operating temperature range: -40°C to 65°C
- IP66 & IK10 double protection
- Quick connection design, more convenient and faster installation and wiring
- Optional stainless steel guard
- Die-cast aluminum body and corrosion resistant frame



EXA03 LED

Explosion-proof LED high-bay lighting for hazardous-rated locations

Catalog Number Logic



1
BASIC LUMINAIRE
EXA03 = ATEX & IECEx Standards

2
LUMENS/WATTS
030 = 4,200 Lumens / 30 Watts
040 = 5,600 Lumens / 40 Watts
050 = 7,000 Lumens / 50 Watts
060 = 8,400 Lumens / 60 Watts
070 = 9,800 Lumens / 70 Watts

3
VOLTAGE
U = 120-277V 50/60HZ

4
OPTICS
120 = 120° Beam angle

5
COLOR TEMPERATURE
WW = 2000K (Warm white)
SW = 3000K (Soft white)
NW = 4000K (Natural white)
CW = 5000K (Cool white)
CD = 6500K (Cool daylight)
RE = Red
GR = Green
BL = Blue
AM = Amber

6
LENS
CG = Clear glass

7
MOUNTING STYLE
P = Pendant mount
T = Trunnion mount
C = Ceiling mount
W = Wall mount
S = 25° Stanchion mount

8
OPTIONS
WG = Wire guard

EXA03 LED

Explosion-proof LED high-bay lighting for hazardous-rated locations

Certification Guide

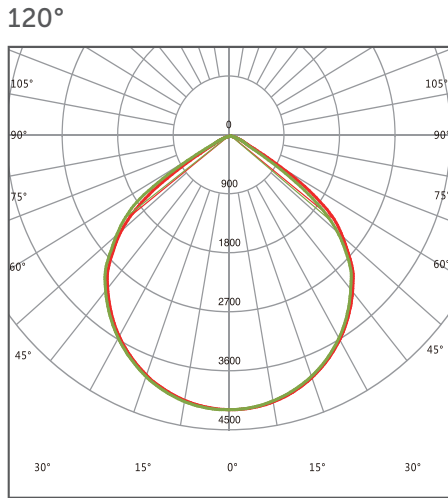
Model	Watts	Operating Voltage	Total Lumens ¹	Lumens per Watt ¹	CRI ¹	CCT ¹	Ambient Temperature ¹	Gas Exdb	Dust Extb	Supply Wire Suitable Temperature, °C
EXA03-030	30W	100-277V 50/60HZ	4200	140.0	70	5000K	-40°C < Tamb < 65°C	T6	80°C	90°C
EXA03-040	40W	100-277V 50/60HZ	5600	140.0	70	5000K	-40°C < Tamb < 65°C	T6	80°C	90°C
EXA03-050	50W	100-277V 50/60HZ	7000	140.0	70	5000K	-40°C < Tamb < 65°C	T6	80°C	90°C
EXA03-060	60W	100-277V 50/60HZ	8400	140.0	70	5000K	-40°C < Tamb < 65°C	T6	95°C	90°C
EXA03-070	70W	100-277V 50/60HZ	9800	140.0	70	5000K	-40°C < Tamb < 65°C	T6	80°C	90°C

¹ When GS, WG, color LEDs or optics options are selected, total lumens, lumens per watt, CRI, CCT, or ambient temperature may change. Consult factory for values.

EXA03 LED

Explosion-proof LED high-bay lighting for hazardous-rated locations

Photometric Data



EXA03 LED

Explosion-proof LED high-bay lighting for hazardous-rated locations

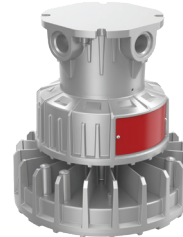
Mounting Options

Pendant Mount: P



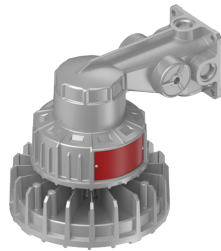
Fixture	Weight
EXA05-030	16.09 lbs.
EXA05-040	16.09 lbs.
EXA05-050	16.09 lbs.
EXA05-060	16.09 lbs.
EXA05-070	16.09 lbs.

Ceiling Mount: C



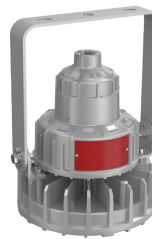
Fixture	Weight
EXA05-030	18.29 lbs.
EXA05-040	18.29 lbs.
EXA05-050	18.29 lbs.
EXA05-060	18.29 lbs.
EXA05-070	18.29 lbs.

Wall Mount: W



Fixture	Weight
EXA05-030	19.84 lbs.
EXA05-040	19.84 lbs.
EXA05-050	19.84 lbs.
EXA05-060	19.84 lbs.
EXA05-070	19.84 lbs.

Trunnion Mount: T




Fixture	Weight
EXA05-030	19.84 lbs.
EXA05-040	19.84 lbs.
EXA05-050	19.84 lbs.
EXA05-060	19.84 lbs.
EXA05-070	19.84 lbs.

25° Stanchion Mount: S



Fixture	Weight
EXA05-030	17.41 lbs.
EXA05-040	17.41 lbs.
EXA05-050	17.41 lbs.
EXA05-060	17.41 lbs.
EXA05-070	17.41 lbs.

Accessories

	Catalog No.	Size (in.)	Shipping Weight (lbs.)
Wire Guard 	BC-EXA03-01	10.63" x 0.27"	0.9 lbs



An Avail Infrastructure Solutions Company

availinfra.com/rig-a-lite

8500 Hansen Road
Houston, TX 77075
(713) 943-0340