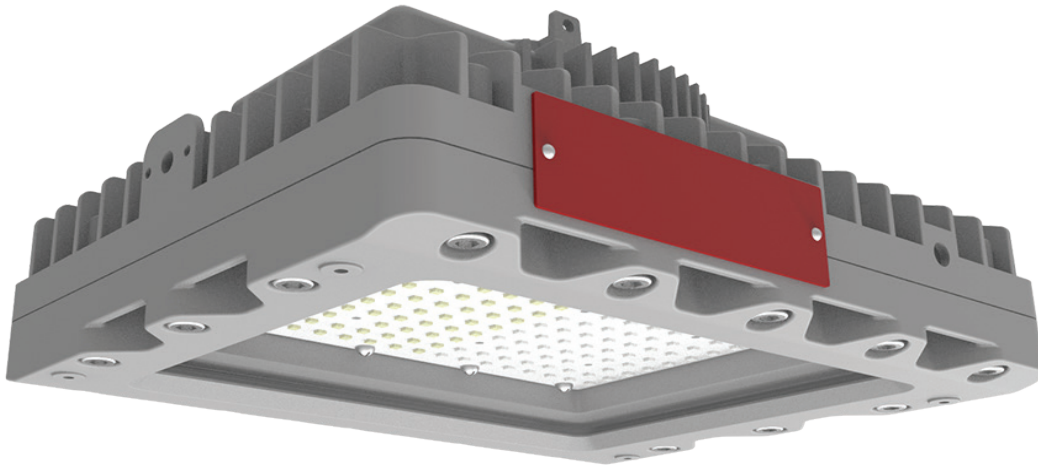


EHSM LED

Explosion proof LED low-bay area lighting for hazardous-rated environments

RIG-A-LITE™
An Avail Infrastructure Solutions Company



E-SERIES

Cost-effective, energy-efficient lighting for demanding environments

The RIG-A-LITE E-Series provides economical lighting solutions for industrial and hazardous applications, offering reliable performance and durability.

Classifications

- Class I, Division I, Groups B, C & D
- Class I, Division 2, Groups A, B, C, & D
- Class II, Divisions 1 & 2, Groups E, F & G
- Class III
- Class I, Zone 1, Group IIB+H2
- Class I, Zone 2, Group IIC
- Zone 21, Zone 22
- UL 844 Hazardous Locations
- UL 1598 Wet Locations
- UL 1598A Marine Outside Type
- UL 8750 LED Safety
- CSA C22.2 No. 137-M1981
- CSA C22.2 No. 250.0
- NEMA 4X
- IP67
- IK09
- 5G
- Tested to 1000 hrs salt spray to standard ASTM "B117-11"



availinfra.com/rig-a-lite

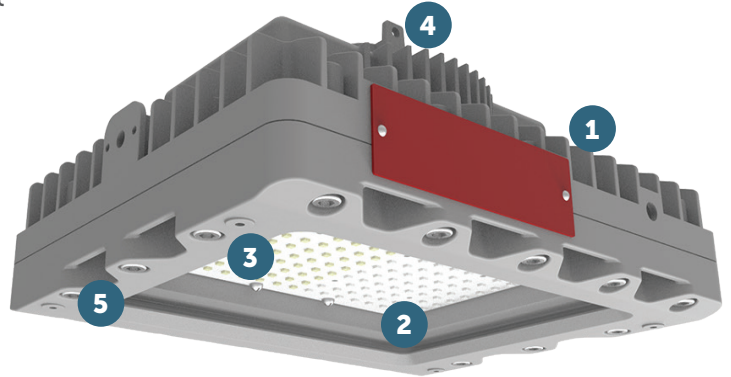
8500 Hansen Road
Houston, TX 77075
(713) 943-0340

EHSM LED

Explosion proof LED low-bay area lighting for hazardous-rated environments

Key Features

- 1** Lightweight and Compact - Low profile & lightweight with single chamber design
- 2** High efficiency - Delivers up to 160lm/W utilizing specially-treated glass for extreme application
- 3** Multiple Beam Angles - 35°, 60°, 90°, 110°, T2, T3, T4 lenses provide more choices for various scenarios
- 4** Retrofit Friendly - Universal mounting accessories minimize the SKUs and maximize the flexibility
- 5** Built to Last - Copper-free aluminum housing and impact resistant lens provide ingress protection



Additional Features

- Universal voltage: AC120-277, 347-480V (50/60Hz)
- Optional self-testing emergency battery backup
- High efficacy up to 160lm/W
- Optics: 30° / 60° / 90° / 110° / T1 / T3 / T4
- 10kV surge protector is standard, 20kV optional
- Dimming: Standard 1-10VDC
- T-rating of T6
- Ambient operating temperature -40°C to 65°C
- Lumen maintenance 150,000 @ L70
- 5-year warranty

Standard Materials

Body:

Housing, heat sink, and adapter are die-cast aluminum with baked powder epoxy/polyester finish

Gaskets:

High temperature resistant silicone

Lens:

Heat, shock, and impact resistant glass

Hardware:

Stainless Steel with lacquer-free nameplate

EHSM LED

Explosion proof LED low-bay area lighting for hazardous-rated environments

Catalog Number Logic



1
BASIC LUMINAIRE
EHSM = N. American Standards

2
LUMENS/WATTS
03 = 3,200 Lumens / 20 Watts
06 = 6,400 Lumens / 40 Watts
10 = 9,600 Lumens / 60 Watts

3
VOLTAGE
U = 100-277V 50/60HZ
N = 347-480V 60HZ

4
EXPLOSION-PROOF LEVEL
1 = C1D1, C2D1
2 = C1D2, C2D1

5
OPTICS
30 = 30°
60 = 60°
90 = 90°
110 = 110°
T2 = Type II
T3 = Type III
T4 = Type IV

6
COLOR TEMPERATURE
WW = 2700K (Warm white)
SW = 3000K (Soft white)
NW = 4000K (Neutral white)
CW = 5000K (Cool white)
AM = Amber

7
LENS
TG = Transparent Glass
FG = Frosted Glass

8
MOUNTING STYLE
PD = Pendant mount (3/4" NPT)
TB2 = Trunion bracket (3/4" NPT)
CJB = Ceiling junction box
W90 = Wall mount 90°
W25 = Wall mount 25°
PS = Pole stanchion
S90A = Stanchion-90° (1-1/4" NPT)
S90B = Stanchion-90° (1-1/2" NPT)
S25A = Stanchion-25° (1-1/4" NPT)
S25B = Stanchion-25° (1-1/2" NPT)

9
COLOR
GR = Gray

10
OPTIONS
WGS2 = Wire guard
SC2 = Safety cable
VS2 = Dark sky visor
SP10U = 10KV surge protector (100-277V) * Standard
SP10N = 10KV surge protector (347-480V) * Standard
SP20U = 20KV surge protector (100-277V)
SP20N = 20KV surge protector (347-480V)
PBC48 = Pipe clamp (M8*48mm) for pole 1-7/8" (48mm)
PBC60 = Pipe clamp (M8*60mm) for pole 2-3/8" (60mm)
PS = Pole stanchion 2-3/8" (60mm)

EHSM LED

Explosion proof LED low-bay area lighting for hazardous-rated environments

Certification Guide

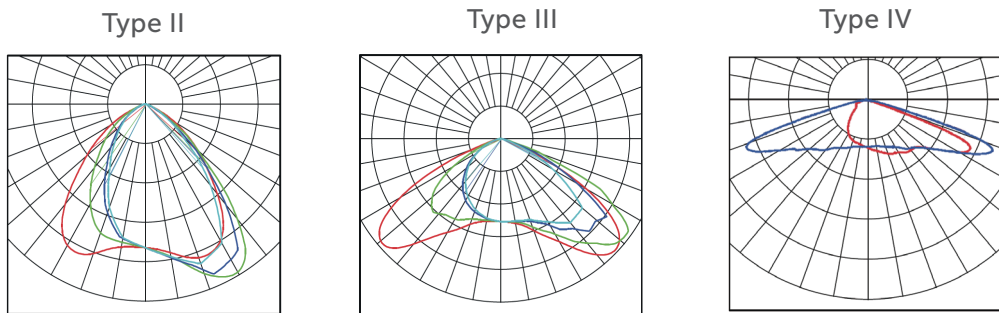
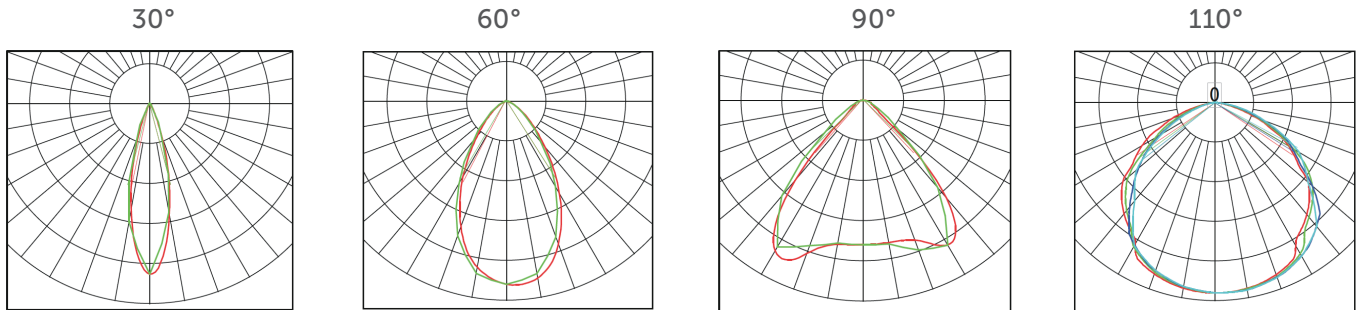
Model	Watts	Operating Voltage	Total Lumens ¹	Lumens per Watt ¹	CRI ¹	CCT ¹	Ambient Temperature ^{1,2}	Class I, Div. 1, Group C & D	Class I, Div. 2, Group A, B, C & D	Class II, Div. 1, Group E, F, G, Class III	Supply Wire Suitable Temperature, °C
EHSM03	20W	100-277V 50/60HZ	3200	160.0	70	5000K	-40°C < Tamb < 65°C	T6	T4A	T4A	90°C
EHSM06	40W	100-277V 50/60HZ	6400	160.0	70	5000K	-40°C < Tamb < 65°C	T6	T4A	T4A	90°C
EHSM10	60W	100-277V 50/60HZ, 347/480V 60HZ	9600	160.0	70	5000K	-40°C < Tamb < 65°C	T6	T4A	T4A	90°C

1. When FG or optics options are selected, total lumens, lumens per watt, CRI, CCT or ambient temperature may change. Consult factory for values.

EHSM LED

Explosion proof LED low-bay area lighting for hazardous-rated environments

Photometric Data

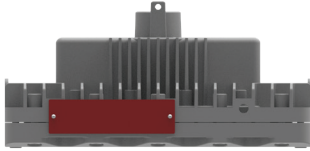


EHSM LED

Explosion proof LED low-bay area lighting for hazardous-rated environments

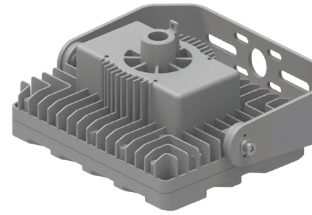
Mounting Options

Pendant Mount: PD - 3/4" NPT



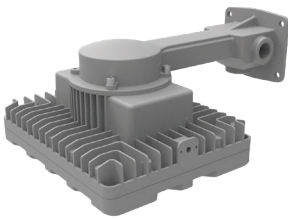
Fixture	Weight
EHSM03	12.13 lbs.
EHSM06	12.13 lbs.
EHSM10	12.13 lbs.

Trunnion Bracket: TB2 3/4" NPT



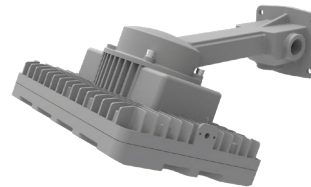
Fixture	Weight
EHSM03	14.55 lbs.
EHSM06	14.55 lbs.
EHSM10	14.55 lbs.

90° Wall Mount: W90 - 3/4" NPT



Fixture	Weight
EHSM03	15.21 lbs.
EHSM06	15.21 lbs.
EHSM10	15.21 lbs.

25° Wall Mount - W25 - 3/4" NPT



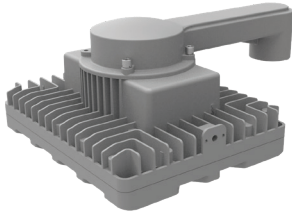
Fixture	Weight
EHSM03	15.21 lbs.
EHSM06	15.21 lbs.
EHSM10	15.21 lbs.

EHSM LED

Explosion proof LED low-bay area lighting for hazardous-rated environments

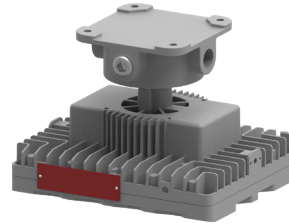
Mounting Options (continued)

90° Stanchion Mount



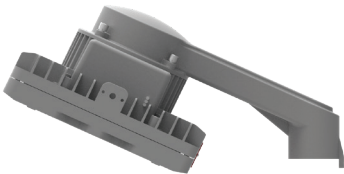
Fixture	Weight
EHSM03	14.11 lbs.
EHSM06	14.11 lbs.
EHSM10	14.11 lbs.

Junction Box



Fixture	Weight
EHSM03	14.33 lbs.
EHSM06	14.33 lbs.
EHSM10	14.33 lbs.

25° Stanchion Mount


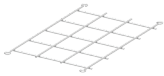









Fixture	Weight
EHSM03	14.11 lbs.
EHSM06	14.11 lbs.
EHSM10	14.11 lbs.

EHSM LED

Explosion proof LED low-bay area lighting for hazardous-rated environments

Accessories

	Catalog No.	Size (in.)	Shipping Weight (lbs.)
Trunnion Bracket 	TB2	11.27" x 6.9" x 2.36"	2.43 lbs.
Stainless Steel Wire Guard 	WGS2	9.89" x 6.11" x 0.24"	0.22 lbs.
Stainless Steel Safety Cable 	SC2	39.4"	0.15 lbs.
Stainless Steel Dark Sky Visor 	VS2	9.93" x 6.62" x 3.15"	0.66 lbs.
Pipe Clamp for 1-7/8" Pole 	PBC48	0.32" x 1.89"	0.35 lbs.
Pipe Clamp for 2-3/8" Pole 	PBC60	0.32" x 2.36"	0.44 lbs.
Pole Stanchion 	PS	2.36"	5.51 lbs.

	Catalog No.	Size (in.)	Shipping Weight (lbs.)
10KV Surge Protector  * Standard	SP10U 10KV (100-277V)	4.18" x 0.91" x 0.51"	0.09 lbs.
	SP10N 10KV (347-480V)	4.33" x 0.99" x 0.71"	0.11 lbs.
20KV Surge Protector 	SP20U 20KV (100-277V)	4.41" x 1.1" x 0.59"	0.12 lbs.
	SP20N 20KV (347-480V)	4.33" x 1.18" x 0.71"	0.15 lbs.



An Avail Infrastructure Solutions Company

availinfra.com/rig-a-lite

8500 Hansen Road
Houston, TX 77075
(713) 943-0340