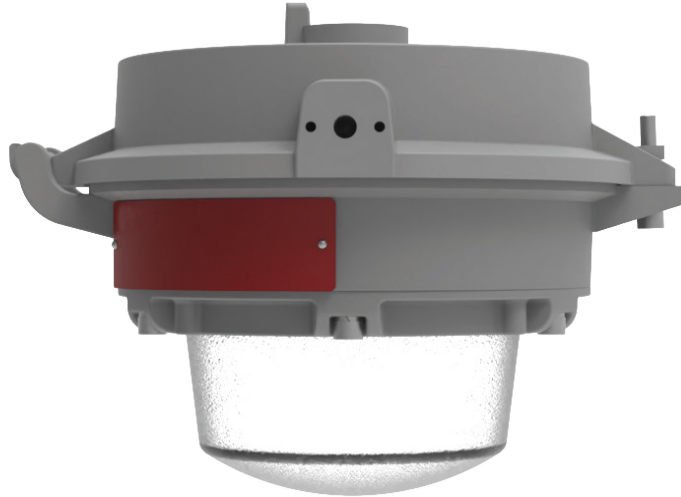


# EHR5 LED

LED jelly-jar lighting  
for hazardous locations

**RIG-A-LITE™**  
An Avail Infrastructure Solutions Company



## E-SERIES

### Cost-effective, energy-efficient lighting for demanding environments

The RIG-A-LITE E-Series provides economical lighting solutions for industrial and hazardous applications, offering reliable performance and durability.

#### Classifications

- Class I, Division 2, Groups A, B, C, & D
- Class II, Divisions 1 & 2, Groups E, F & G
- Class III
- Class I, Zone 1, Group IIB
- Class I, Zone 2, Group IIC
- Zone 21, Zone 22
- UL 844 Hazardous Locations
- UL 1598 Wet Locations
- UL 1598A Marine Outside Type
- UL 8750 LED Safety
- Paint Spray Booth
- CSA C22.2 No. 137-M1981
- CSA C22.2 No. 250.0-08
- NEMA 4X
- IP67
- IK09
- 5G
- Resistant up to 2,000 PSI hose directed water
- Tested to 1000 hrs salt spray to standard ASTM "B117-11"



[availinfra.com/rig-a-lite](http://availinfra.com/rig-a-lite)

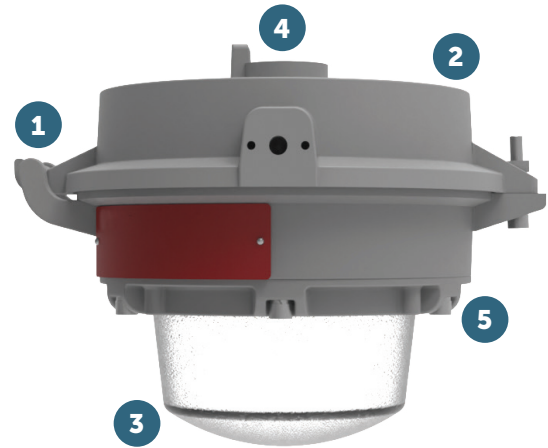
8500 Hansen Road,  
Houston, TX 77075  
(713) 943-0340

# EHRS LED

## LED jelly-jar lighting for hazardous locations

### Key Features

- 1 Easy Installation - Single barrel nut and hinge design, one-hand operation for quick and easy installation
- 2 Lightweight & Compact - Only 5.7 lbs, designed for low mounting heights and confined spaces
- 3 High Efficiency - Delivers up to 150 lm/W, reducing energy costs by up to 75% over conventional lamps
- 4 Retrofit Friendly - Universal mounting accessories minimize the SKUs and maximize the flexibility
- 5 Built to Last - Copper-free aluminum housing and impact resistant lens protects against water and dust



### Additional Features

- Universal voltage: AC100-277 (50/60Hz)
- High efficacy up to 150 lm/W, up to 4,500lm
- CCT Adjustable (3000K/4000K/5000K)
- Wildlife-friendly amber color option
- 10kV surge protector is standard, 20kV is optional
- Dimming: Standard 1-10VDC
- Ambient operating temperature -40°C to 65°C
- Lumen maintenance 150,000 @ L70
- 5-year warranty

### Standard Materials

**Body:**

Housing, splice box, and adapter are die-cast copper-free aluminum with baked powder epoxy/polyester finish

**Gaskets:**

High temperature resistant silicone

**Lens:**

Heat, shock, and impact resistant diffuse glass drop

**Hardware:**

Stainless Steel with lacquer-free nameplate

# EHRS LED

## LED jelly-jar lighting for hazardous locations

### Catalog Number Logic

**EHRS - 01 - U - 2 - 110 - WW - DFG - PD1 - GR - PS**

1

2

3

4

5

6

7

8

9

10

#### 1

##### BASIC LUMINAIRE

EHRS = N. American Standards

#### 2

##### LUMENS/WATTS

01 = 1,500 Lumens / 10 Watts

03 = 3,000 Lumens / 20 Watts

05 = 4,500 Lumens / 30 Watts

#### 3

##### VOLTAGE

U = 100-277V 50/60HZ

#### 4

##### PROTECTION LEVEL

2 = C1D2, C2D1

#### 5

##### OPTICS

110 = 110° Beam Angle

#### 6

##### COLOR TEMPERATURE

WW = 2700K (Warm white)

SW = 3000K (Soft white)

NW = 4000K (Neutral white)

CW = 5000K (Cool white)

AM = Amber

AJC = Adjustable CCT

(3000K/4000K/5000K)

#### 7

##### LENS

DFG = Frosted glass drop lens

#### 8

##### MOUNTING STYLE

PD1 = Pendant mount (3/4" NPT)

PD2 = Pendant mount (1" NPT)

TB4 = Trunion bracket (3/4" NPT)

W90 = Wall mount 90°

W25 = Wall mount 25°

S90A = Stanchion-90° (1-1/4" NPT)

S90B = Stanchion-90° (1-1/2" NPT)

S25A = Stanchion-25° (1-1/4" NPT)

S25B = Stanchion-25° (1-1/2" NPT)

CJB = Ceiling junction box (3/4" NPT)

#### 9

##### COLOR

GR = Gray

#### 10

##### OPTIONS

WGR4 = Wire guard for drop lens

SC2 = Safety cable

VRM25 = Dark sky bolt-on visor 25°

VRM90 = Dark sky bolt-on visor 90°

SP10U = 10KV surge protector (100-277V)

\* Standard

SP20U = 20KV surge protector (100-277V)

PBC48 = Pipe clamp (M8\*48mm)

for pole 1-7/8" (48mm)

PBC60 = Pipe clamp (M8\*60mm)

for pole 2-3/8" (60mm)

CAB = 3" SEOWW-18/3 Cord

CGL = Cable gland 3/4" NPT

PS = Pole stanchion 2" (60mm)

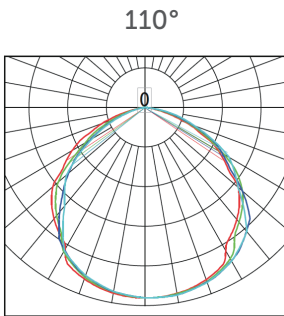
# EHRS LED

## LED jelly-jar lighting for hazardous locations

### Certification Guide

Model	Watts	Operating Voltage	Total Lumens	Lumens per Watt	CRI	CCT	Ambient Temperature	Class I, Div. 2, Group A, B, C & D	Class II, Div. 1, Group E, F, G, Class III	Supply Wire Suitable Temperature, °C
EHRS01	10W	100-277V 50/60HZ	1500	150.0	70	5000K	-40°C < Tamb < 65°C	T4A	T6	90°C
EHRS03	20W	100-277V 50/60HZ	3000	150.0	70	5000K	-40°C < Tamb < 65°C	T4A	T6	90°C
EHRS05	30W	100-277V 50/60HZ	4500	150.0	70	5000K	-40°C < Tamb < 65°C	T4A	T6	90°C

### Photometric Data

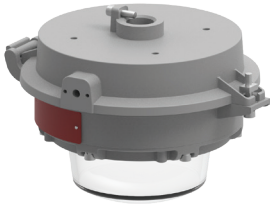


# EHRS LED

## LED jelly-jar lighting for hazardous locations

### Mounting Options

#### Pendant Mount:



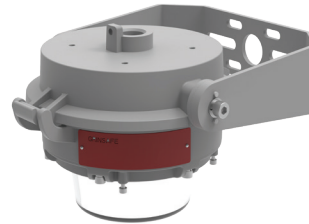
#### PD1 (3/4" NPT)

Fixture	Weight
EHRS01	5.73 lbs.
EHRS03	5.73 lbs.
EHRS05	5.73 lbs..

#### PD2 (1" NPT)

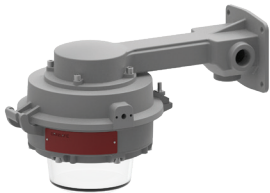
Fixture	Weight
EHRS01	5.73 lbs.
EHRS03	5.73 lbs.
EHRS05	5.73 lbs.

#### Trunnion Bracket: TB4



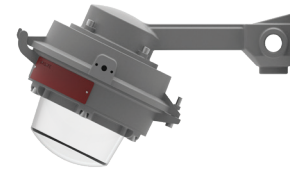
Fixture	Weight
EHRS01	7.91 lbs.
EHRS03	7.91 lbs.
EHRS05	7.91 lbs.

#### 90° Wall Mount: W90



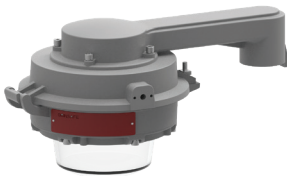
Fixture	Weight
EHRS01	8.82 lbs.
EHRS03	8.82 lbs.
EHRS05	8.82 lbs.

#### 25° Wall Mount: W25



Fixture	Weight
EHRS01	8.82 lbs.
EHRS03	8.82 lbs.
EHRS05	8.82 lbs.

#### 90° Stanchion:



#### S90A (1-1/4" NPT)

Fixture	Weight
EHRS01	7.72 lbs.
EHRS03	7.72 lbs.
EHRS05	7.72 lbs.

#### S90B (1-1/2" NPT)

Fixture	Weight
EHRS01	7.72 lbs.
EHRS03	7.72 lbs.
EHRS05	7.72 lbs.

#### Ceiling Junction Box



Fixture	Weight
EHRS01	7.94 lbs.
EHRS03	7.94 lbs.
EHRS05	7.94 lbs.

#### 25° Stanchion:



#### S25A (1-1/4" NPT)

Fixture	Weight
EHRS01	7.72 lbs.
EHRS03	7.72 lbs.
EHRS05	7.72 lbs.







#### S25B (1-1/2" NPT)






Fixture	Weight
EHRS01	7.72 lbs.
EHRS03	7.72 lbs.
EHRS05	7.72 lbs.

# EHRS LED

## LED jelly-jar lighting for hazardous locations

### Accessories

	Catalog No.	Size (in.)	Shipping Weight (lbs.)
<b>Trunnion Bracket</b> 	TB4	9.1" x 7.29" x 2.36"	2.18 lbs.
<b>Stainless Steel Wire Guard</b> 	WGR4	6.7" x 2.88"	0.22 lbs
<b>Stainless Steel Safety Cable</b> 	SC2	39.4"	0.15 lbs.
<b>S. Steel Dark Sky Visor 25°</b> 	VRM25	15.21" x 9.22"	1.32 lbs.
<b>S. Steel Dark Sky Visor 90°</b> 	VRM90	16.15" x 4.85"	1.32 lbs.
<b>Pipe Clamp for 1-7/8" Pole</b> 	PBC48	0.32" x 1.89"	0.35 lbs.
<b>Pipe Clamp for 2-3/8" Pole</b> 	PBC60	0.32" x 2.36"	0.44 lbs

	Catalog No.	Size (in.)	Shipping Weight (lbs.)
<b>Pole Stanchion</b> 	PS	2.36"	5.51 lbs.
<b>3' SEOW-18/3 Cord</b> 	CAB	39.4"	0.21 lbs.
<b>Cable Gland</b> 	CGL	1.46" x 1.73"	0.06 lbs.
<b>10KV Surge Protector</b> 	SP10U 20KV (100-277V)	4.18" x 0.91" x 0.51"	0.09 lbs
	SP10N 10KV (347-480V)	4.33" x 0.99" x 0.71"	0.11 lbs.
<b>20KV Surge Protector</b> 	SP20U 20KV (100-277V)	4.41" x 1.1" x 0.59"	0.12 lbs.
	SP20N 20KV (347-480V)	4.33" x 1.18" x 0.71"	0.15 lbs.



An Avail Infrastructure Solutions Company

[availinfra.com/rig-a-lite](http://availinfra.com/rig-a-lite)

8500 Hansen Road  
Houston, TX 77075  
(713) 943-0340