

EHRM LED

Hazardous-rated LED area lighting for challenging environments

RIG-A-LITE™
An Avail Infrastructure Solutions Company

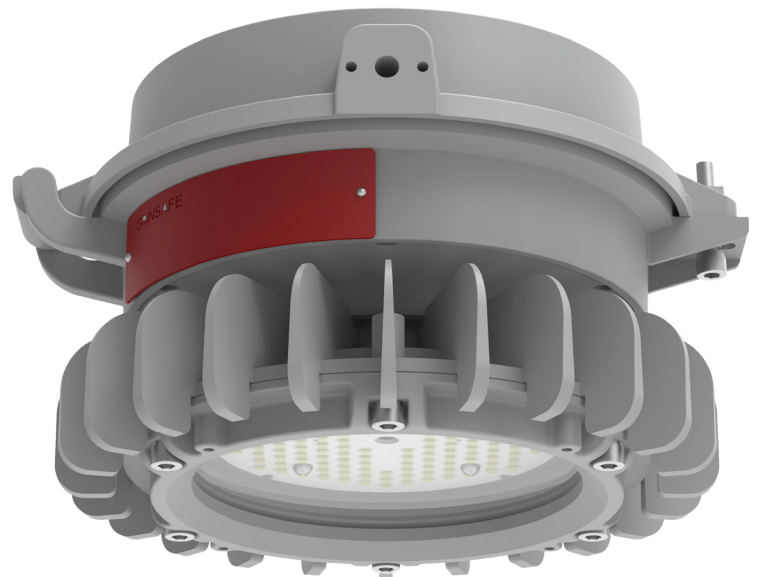
E-SERIES

Cost-effective, energy-efficient lighting for demanding environments

The RIG-A-LITE E-Series provides economical lighting solutions for industrial and hazardous applications, offering reliable performance and durability.

Classifications

- Class I, Division 2, Groups A, B, C, & D
- Class II, Division 1 & 2, Groups E, F & G
- Class III
- Class I, Zone 2, Group IIC
- Zone 21, Zone 22
- UL 844 Hazardous Locations
- UL 1598 Wet Locations
- UL 1598A Marine Outside Type
- UL 8750 LED Safety
- CSA C22.2 No. 137-M1981
- CSA C22.2 No. 250.0
- NEMA 4X
- IP67
- IK09
- 5G
- Resistant up to 2,000 PSI hose directed water
- Tested to 1000 hrs salt spray to standard ASTM B117-11"



availinfra.com/rig-a-lite

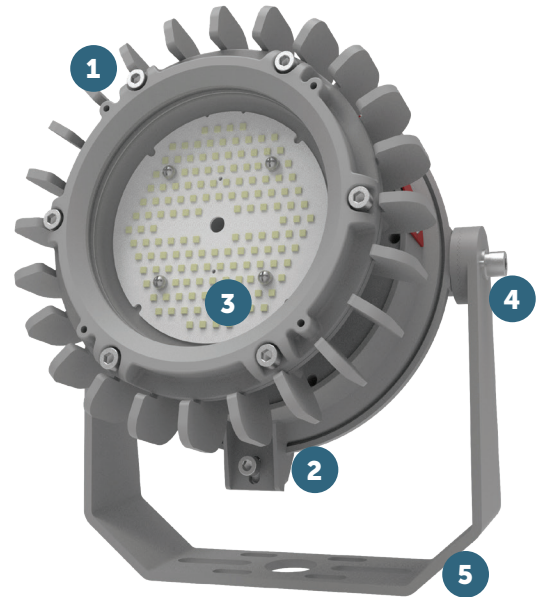
8500 Hansen Road
Houston, TX 77075
(713) 943-0340

EHRM LED

Hazardous-rated LED area lighting for challenging environments

Key Features

- 1 Easy Installation** - Single barrel nut and hinge design, one-hand operation for quick and easy installation
- 2 Lightweight & Compact** - 3.5kg fixture weight only, design for low mounting heights and confined spaces
- 3 High Efficiency** - Delivers up to 160lm/W and 9,600 lumens reducing energy costs by up to 75% over conventional lamps
- 4 Retrofit Friendly** - Universal mounting accessories minimizes the SKUs and maximizes the flexibility
- 5 Built to Last** - Copper-free aluminum housing and impact resistant lens are sealed from the outside environment



Additional Features

- Universal voltage: AC120-277, 347-480V (50/60Hz)
- High efficacy up to 160lm/W
- Optics: T1 / T3 / 110°
- CCT Adjustable (3000K/4000K/5000K)
- Wildlife-friendly amber color options
- 10kV surge protector is standard, 20kV optional
- Dimming: Standard 1-10VDC
- Ambient operating temperature -40°C to 60°C
- Lumen maintenance L70 > 150,000 hours @ 25°C
- 5-year warranty

Standard Materials

Body:

Housing, splice box, and adapter are die-cast copper-free aluminum with baked powder epoxy/polyester finish

Gaskets:

High temperature resistant silicone

Lens:

Heat, shock, and impact resistant glass or polycarbonate

Hardware:

Stainless Steel

EHRM LED

Hazardous-rated LED area lighting for challenging environments

Catalog Number Logic

EHRM 10 - U - 2 - T1 - WW - TG - PD - GR - XX

1

2

3

4

5

6

7

8

9

10

1

BASIC LUMINAIRE

EHRM = N. American Standards

2

LUMENS/WATTS

07 = 6,000 Lumens / 40 Watts

10 = 9,600 Lumens / 60 Watts

3

VOLTAGE

U = 100-277V

N = 347-480V

4

PROTECTION LEVEL

2 = C1D2, C2D1

5

OPTICS

110 = 110° Beam Angle

T1 = Type I

T3 = Type III

6

COLOR TEMPERATURE

WW = 2700K (Warm white)

SW = 3000K (Soft white)

NW = 4000K (Neutral white)

CW = 5000K (Cool white)

AM = Amber

AJC = Adjustable CCT
(3000K/4000K/5000K)

7

LENS

TG = Transparent Glass

FG = Frosted Glass

DFG = Frosted Drop Lens

TPL = Transparent Polycarbonate

FPL = Frosted Polycarbonate°

8

MOUNTING STYLE

PD1 = Pendant mount (3/4" NPT)

PD2 = Pendant mount (1" NPT)

TB4 = Trunnion bracket (3/4" NPT)

CJB = Ceiling junction box

W90 = Wall mount 90°

W25 = Wall mount 25°

S90A = Stanchion-90° (1-1/4" NPT)

S90B = Stanchion-90° (1-1/2" NPT)

S25A = Stanchion-25° (1-1/4" NPT)

S25B = Stanchion-25° (1-1/2" NPT)

9

COLOR

GR = Gray

10

OPTIONS

WGR3 = Wire guard for flat glass

WGR4 = Wire guard for drop lens

SC2 = Safety cable

VRM25 = Dark sky bolt-on visor 25°

VRM90 = Dark sky bolt-on visor 90°

SP10U = 10KV surge protector

(100-277V) * Standard

SP10N = 10KV surge protector

(347-480V) * Standard

SP20U = 20KV surge protector (100-277V)

SP20N = 20KV surge protector (347-480V)

PBC48 = Pipe clamp (M8*48mm

for pole 1-7/8" (48mm) diameter

PBC60 = Pipe clamp (M8*60mm) for pole

2-3/8" (60mm) diameter

CAB = 3' SEOOW-18/3 cord

CGL = Cable gland 3/4" NPT

PS = Pole stanchion 2-3/8" (60mm)

EHRM LED

Hazardous-rated LED area lighting for challenging environments

Certification Guide

Model	Watts	Operating Voltage	Total Lumens ¹	Lumens per Watt ¹	CRI ¹	CCT ¹	Ambient Temperature ¹	Class I, Div. 2, Group A, B, C & D	Class II, Div. 1, Group E, F, G, Class III	Supply Wire Suitable Temperature, °C
EHRM07	40W	100-277V 50/60HZ	6000	150.0	70	5000K	-40°C < Tamb < 65°C	T4A	T5	90°C
EHRM10N	60W	347/480V 60HZ	9600	160.0	70	5000K	-40°C < Tamb < 65°C	T4	T5	90°C
EHRM10U	60W	100-277V 50/60HZ	9600	160.0	70	5000K	-40°C < Tamb < 65°C	T4A	T5	90°C

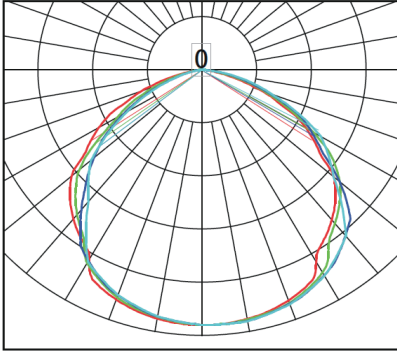
1. When frosted lenses or optics options are selected, total lumens, lumens per watt, CRI, CCT or ambient temperature may change. Consult factory for values.

EHRM LED

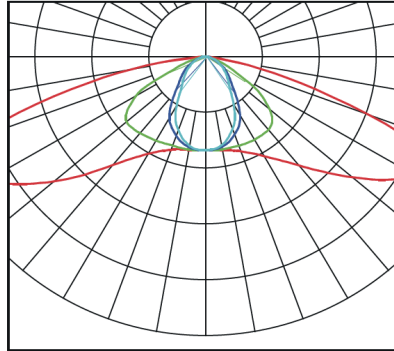
Hazardous-rated LED area lighting for challenging environments

Photometric Data

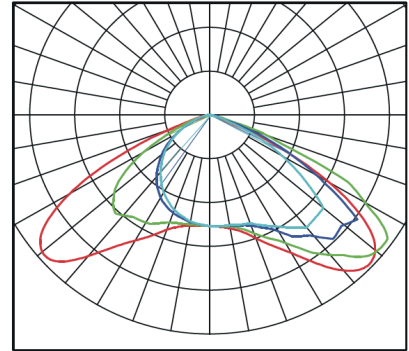
110°



Type I



Type III



EHRM LED

Hazardous-rated LED area lighting for challenging environments

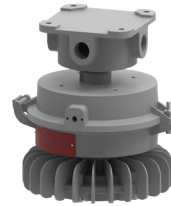
Mounting Options

Pendant Mount: PD1 - 3/4" NPT / PD2 - 1" NPT



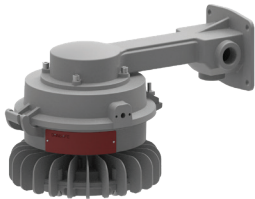
Fixture	Weight
EHRM07	7.28 lbs.
EHRM10N	7.72 lbs.
EHRM10U	7.72 lbs.

Ceiling Junction Box: CJB - 3/4" NPT



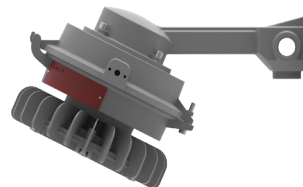
Fixture	Weight
EHRM07	9.48 lbs.
EHRM10N	9.92 lbs.
EHRM10U	9.92 lbs.

90° Wall Mount: W90 - 3/4" NPT



Fixture	Weight
EHRM07	10.36 lbs.
EHRM10N	10.80 lbs.
EHRM10U	10.80 lbs.

25° Wall Mount: W25 - 3/4" NPT



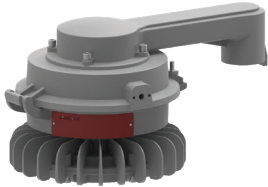
Fixture	Weight
EHRM07	10.36 lbs.
EHRM10N	10.80 lbs.
EHRM10U	10.80 lbs.

EHRM LED

Hazardous-rated LED area lighting for challenging environments

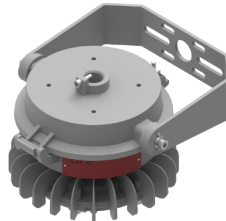
Mounting Options (continued)

90° Stanchion Mount: S90A - 1-1/4" NPT



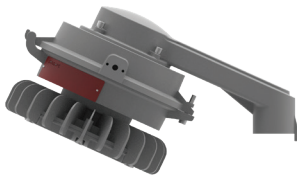
Fixture	Weight
EHRM07	9.26 lbs.
EHRM10N	9.70 lbs.
EHRM10U	9.70 lbs.

Trunnion Bracket: TB4 - 3/4" NPT



Fixture	Weight
EHRM07	9.46 lbs.
EHRM10N	9.90 lbs.
EHRM10U	9.90 lbs.

25° Stanchion Mount: S90B - 1-1/2" NPT
















Fixture	Weight
EHRM07	9.26 lbs.
EHRM10N	9.70 lbs.
EHRM10U	9.70 lbs.

EHRM LED

Hazardous-rated LED area lighting for challenging environments

Accessories

	Catalog No.	Size (in.)	Shipping Weight (lbs.)
Trunnion Bracket 	TB4	9.1" x 7.29" x 2.36"	2.18 lbs.
Bolt-on Wire Guard (flat glass) 	WGR3	6.7" x 0.24"	0.11 lbs.
Stainless Steel Safety Cable 	SC2	39.4"	0.15 lbs.
Stainless Steel Wire Guard (drop lens) 	WGR4	6.7" x 2.88"	0.22 lbs.
Pipe Clamp for 1-7/8" Pole 	PBC48	0.32" x 1.89"	0.35 lbs.
Pipe Clamp for 2-3/8" Pole 	PBC60	0.32" x 2.36"	0.44 lbs.
Pole Stanchion 	PS	2.36"	5.51 lbs.
Stainless Steel Dark Sky Visor 90° 	VRM90	16.15" x 4.85"	1.32 lbs.
Stainless Steel Dark Sky Visor 25° 	VRM25	15.21" x 9.22"	1.32 lbs.

	Catalog No.	Size (in.)	Shipping Weight (lbs.)
3' SEOWW-18/3 Cord 	CAB	39.4"	0.21 lbs.
Cable Gland 	CGL	1.46" x 1.73"	0.06 lbs.
10KV Surge Protector 	SP10U 10KV (100-277V)	4.18" x 0.91" x 0.51" Without Wire	0.09 lbs.
* Standard	SP10N 10KV (347-480V)	4.33" x 0.99" x 0.71" Without Wire	0.11 lbs.
20KV Surge Protector 	SP20U 20KV (100-277V)	4.41" x 1.1" x 0.59" Without Wire	0.12 lbs.
	SP20N 20KV (347-480V)	4.33" x 1.18" x 0.71" Without Wire	0.15 lbs.



An Avail Infrastructure Solutions Company

availinfra.com/rig-a-lite

8500 Hansen Road
Houston, TX 77075
(713) 943-0340