

# EHRL LED

Hazardous-rated LED high-bay lighting for challenging environments

**RIG-A-LITE™**  
An Avail Infrastructure Solutions Company

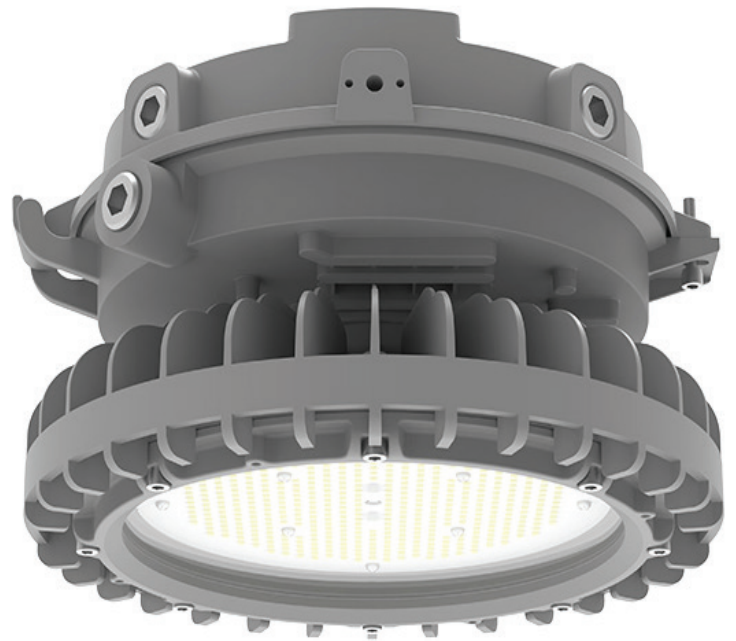
## E-SERIES

### Cost-effective, energy-efficient lighting for demanding environments

The RIG-A-LITE E-Series provides economical lighting solutions for industrial and hazardous applications, offering reliable performance and durability.

#### Classifications

- Class I, Division 2, Groups A, B, C, & D
- Class II, Division 1 & 2, Groups E, F & G
- Class III
- Class I, Zone 2, Group IIC
- Zone 21, Zone 22
- UL 844 Hazardous Locations
- UL 1598 Wet Locations
- UL 1598A Marine Outside Type
- UL 8750 LED Safety
- CSA C22.2 No. 137-M1981
- CSA C22.2 No. 250.0-08
- NEMA 4X
- IP67
- IK09
- 5G
- Resistant up to 2000 PSI of hose directed water
- Tested to 1000 hrs salt spray to standard ASTM" B117-11"



[availinfra.com/rig-a-lite](http://availinfra.com/rig-a-lite)

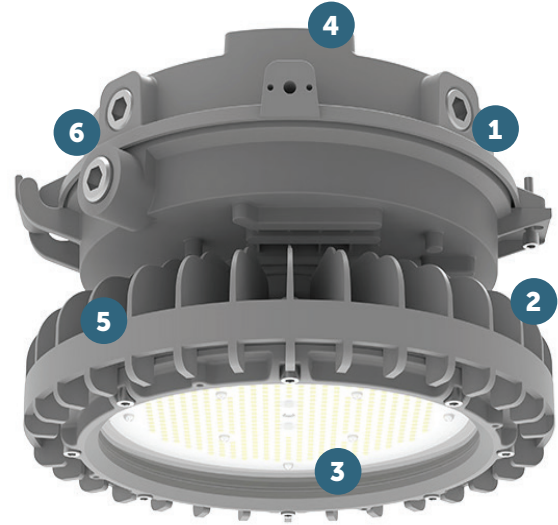
8500 Hansen Road  
Houston, TX 77075  
(713) 943-0340

# EHRL LED

## Hazardous-rated LED high-bay lighting for challenging environments

### Key Features

- 1 Easy Installation - Single barrel nut and hinge design, one-hand operation for quick and easy installation
- 2 Low Profile - 196mm in height with maximum 34,000 lumen output fits perfectly in confined areas
- 3 High Efficacy - Lumen efficacy up to 170lm/W, reducing energy costs by up to 75% over conventional
- 4 Retrofit Friendly - Universal mounting accessories minimize the SKUs and maximize the flexibility
- 5 Built to Last - Copper-free aluminum and impact resistant lens provide ingress protection
- 6 Expandability - Sensor can be attached on the light to realize the intelligent application



### Additional Features

- Universal voltage: AC120-277, 347-480V (50/60Hz)
- Optional self-testing emergency battery backup
- High efficacy up to 170lm/W
- Optics: T1 / T3 / 110° beam angle
- CCT Adjustable (3000K/4000K/5000K)
- Wildlife-friendly amber color options
- 10kV surge protector is standard, 20kV optional
- Dimming: Standard 1-10VDC
- Ambient operating temperature -40°C to 65°C (standard model); 0°C to 50°C (emergency battery backup model)
- Lumen maintenance 150,000 @ L70
- 5-year warranty

### Standard Materials

#### Body:

Housing, splice box, and adapter are die-cast copper-free aluminum with baked powder epoxy/polyester finish

#### Gaskets:

High temperature resistant silicone

#### Lens:

Heat, shock, and impact resistant glass or polycarbonate

#### Hardware:

Stainless Steel

# EHRL LED

Hazardous-rated LED high-bay lighting for challenging environments

## Catalog Number Logic

EHRL 07 - U - 2 - T1 - WW - TG - TB3 - GR - XX

1 2 3 4 5 6 7 8 9 10

### 1

#### BASIC LUMINAIRE

EHRL = N. American Standards

### 2

#### LUMENS/WATTS

07 = 6,800 Lumens / 40 Watts  
10 = 10,200 Lumens / 60 Watts  
14 = 13,600 Lumens / 80 Watts  
17 = 17,000 Lumens / 100 Watts  
26 = 25,500 Lumens / 150 Watts  
34 = 32,000 Lumens / 200 Watts

### 3

#### VOLTAGE

U = 100-277V 50/60HZ  
N = 347-480V 60HZ

### 4

#### PROTECTION LEVEL

2 = C1D2, C2D1  
0 = Not Hazardous

### 5

#### OPTICS

110 = 110° Beam Angle  
T1 = Type I  
T3 = Type III

### 6

#### COLOR TEMPERATURE

WW = 2700K (Warm white)  
SW = 3000K (Soft white)  
NW = 4000K (Neutral white)  
CW = 5000K (Cool white)  
AM = Amber  
AJC = Adjustable CCT  
(3000K/4000K/5000K)

### 7

#### LENS

TG = Transparent Glass  
FG = Frosted Glass  
DFG = Frosted Drop Lens  
TPL = Transparent Polycarbonate  
FPL = Frosted Polycarbonate

### 8

#### MOUNTING STYLE

PD1 = Pendant mount (3/4" NPT)  
PD2 = Pendant mount 1" NPT  
TB3 = Trunnion bracket  
FLM = Flush ceiling/wall mount  
W90 = Wall mount 90°  
W25 = Wall mount 25°  
S90A = Stanchion-90° (1-1/4" NPT)  
S90B = Stanchion-90° (1-1/2" NPT)  
S25A = Stanchion-25° (1-1/4" NPT)  
S25B = Stanchion-25° (1-1/2" NPT)

### 9

#### COLOR

GR = Gray

### 10

#### OPTIONS

WGR1 = Wire guard for flat glass  
WGR2 = Wire guard for drop lens  
SC1 = Safety cable  
VRL25 = Dark sky bolt-on visor 25°  
VRL90 = Dark sky bolt-on visor 90°  
SP10U = 10KV surge protector  
(100-277V) \* Standard  
SP10N = 10KV surge protector  
(347-480V) \* Standard  
SP20U = 20KV surge protector (100-277V)  
SP20N = 20KV surge protector (347-480V)  
PBC48 = Pipe clamp (M8\*48mm) for pole  
1-7/8" (48mm) diameter  
PBC60 = Pipe clamp (M8\*60mm)  
for pole 2-3/8" (60mm) diameter  
CAB = 3' SEOOW-18/3 Cord  
CGL = Cable gland 3/4" NPT  
PS = Pole stanchion 2-3/8" (60mm)

# EHRL LED

## Hazardous-rated LED high-bay lighting for challenging environments

### Certification Guide

Model	Watts	Operating Voltage	Total Lumens <sup>1</sup>	Lumens per Watt <sup>1</sup>	CRI <sup>1</sup>	CCT <sup>1</sup>	Ambient Temperature <sup>1</sup>	Class I, Div. 2, Group A, B, C & D	Class II, Div. 1, Group E, F, G, Class III	Supply Wire Suitable Temperature, °C
EHRL07	40W	100-277V 50/60HZ	6800	170.0	70	5000K	-40°C < Tamb < 65°C	T4A	T4A	90°C
EHRL10	60W	100-277V 50/60HZ	10200	170.0	70	5000K	-40°C < Tamb < 65°C	T4A	T4A	90°C
EHRL14	80W	100-277V 50/60HZ, 347/480V 60HZ	13600	170.0	70	5000K	-40°C < Tamb < 65°C	T4A	T4A	90°C
EHRL17	100W	100-277V 50/60HZ, 347/480V 60HZ	17000	170.0	70	5000K	-40°C < Tamb < 65°C	T4A	T4A	90°C
EHRL26	150W	100-277V 50/60HZ, 347/480V 60HZ	25500	170.0	70	5000K	-40°C < Tamb < 65°C	T4A	T4A	90°C
EHRL34	200W	100-277V 50/60HZ, 347/480V 60HZ	32000	160.0	70	5000K	-40°C < Tamb < 60°C	T4	T4A	90°C

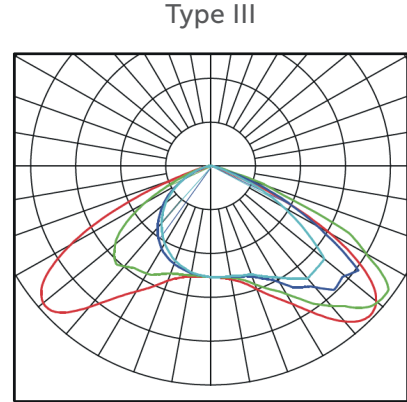
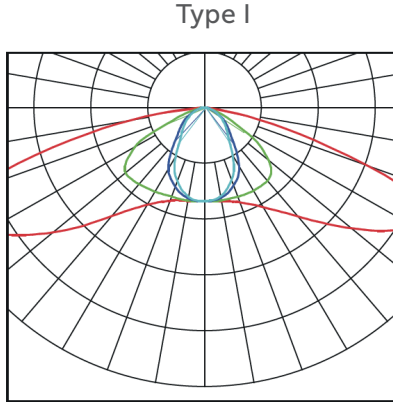
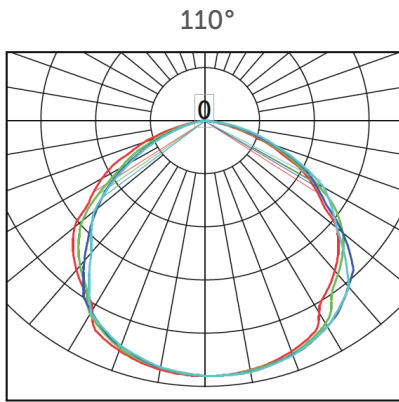
\* Ambient temperature of all EMB option models is 0°C < Tamb < 50°C.

1. When frosted lenses or optics options are selected, total lumens, lumens per watt, CRI, CCT or ambient temperature may change. Consult factory for values.

# EHRL LED

Hazardous-rated LED high-bay lighting for challenging environments

## Photometric Data

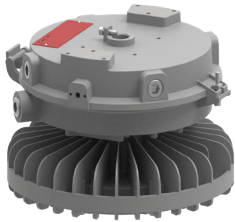


# EHRL LED

Hazardous-rated LED high-bay lighting for challenging environments

## Mounting Options

### Pendant Mount: PD1 - 3/4" NPT / PD2 - 1" NPT



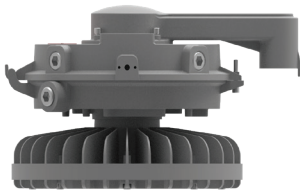
Fixture	Weight
EHRL07	17.86 lbs.
EHRL10	18.08 lbs.
EHRL14	16.98 lbs.
EHRL17	16.98 lbs.
EHRL26	17.20 lbs.
EHRL34	17.64 lbs.

### Flush Ceiling Mount: FLM



Fixture	Weight
EHRL07	19.18 lbs.
EHRL10	19.40 lbs.
EHRL14	18.30 lbs.
EHRL17	18.30 lbs.
EHRL26	18.52 lbs.
EHRL34	18.96 lbs.

### 90° Stanchion Mount: S90A - 1-1/4" NPT



Fixture	Weight
EHRL07	19.84 lbs.
EHRL10	20.06 lbs.
EHRL14	18.96 lbs.
EHRL17	18.96 lbs.
EHRL26	19.18 lbs.
EHRL34	19.62 lbs.

### 25° Stanchion Mount: S90B - 1-1/2" NPT



Fixture	Weight
EHRL07	19.84 lbs.
EHRL10	20.06 lbs.
EHRL14	18.96 lbs.
EHRL17	18.96 lbs.
EHRL26	19.18 lbs.
EHRL34	19.62 lbs.

For "EM" emergency option, add 1.47" in height

For Guard option, add 0.136" in height

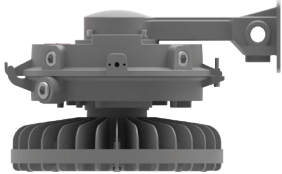
No options for fixture without emergency backup. For 40W and 60W, EHRM models are recommended.

# EHRL LED

## Hazardous-rated LED high-bay lighting for challenging environments

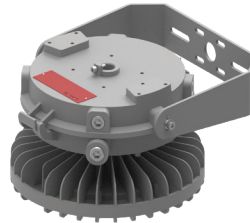
### Mounting Options

#### 90° Wall Mount: W90 - 3/4" NPT



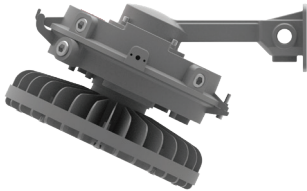
Fixture	Weight
EHRL07	20.94 lbs.
EHRL10	21.16 lbs.
EHRL14	20.06 lbs.
EHRL17	20.06 lbs.
EHRL26	20.28 lbs.
EHRL34	20.72 lbs.

#### Trunnion Bracket: TB3



Fixture	Weight
EHRL07	21.83 lbs.
EHRL10	22.05 lbs.
EHRL14	20.94 lbs.
EHRL17	20.94 lbs.
EHRL26	21.16 lbs.
EHRL34	21.61 lbs.

#### 25° Wall Mount: W25 - 3/4" NPT



Fixture	Weight
EHRL07	20.94 lbs.
EHRL10	21.16 lbs.
EHRL14	20.06 lbs.
EHRL17	20.06 lbs.
EHRL26	20.28 lbs.
EHRL34	20.72 lbs.

For "EM" emergency option, add 1.47" in height










For Guard option, add 0.136" in height






No options for fixture without emergency backup. For 40W and 60W, EHRM models are recommended.

# EHRL LED

Hazardous-rated LED high-bay lighting for challenging environments

## Accessories

	Catalog No.	Size (in.)	Shipping Weight (lbs.)
 <p><b>Trunnion Bracket</b></p>	TB3	12.53" x 9.65" x 2.76"	3.75 lbs.
 <p><b>Bolt-on Wire Guard (flat glass)</b></p>	WGR1	10.84" x 0.24"	0.33 lbs.
 <p><b>Stainless Steel Safety Cable</b></p>	SC1	39.4"	0.29 lbs.
 <p><b>Stainless Steel Wire Guard (drop lens)</b></p>	WGR2	10.84" x 1.89"	0.44 lbs.
 <p><b>Pipe Clamp for 1-7/8" Pole</b></p>	PBC48	0.32" x 1.89"	0.35 lbs.
 <p><b>Pipe Clamp for 2-3/8" Pole</b></p>	PBC60	0.32" x 2.36"	0.44 lbs.
 <p><b>Pole Stanchion</b></p>	PS	2.36"	5.51 lbs.
 <p><b>Stainless Steel Dark Sky Visor 90°</b></p>	VRL90	16.15" x 4.85"	1.32 lbs.
 <p><b>Stainless Steel Dark Sky Visor 25°</b></p>	VRL25	15.21" x 9.22"	1.32 lbs.

	Catalog No.	Size (in.)	Shipping Weight (lbs.)
 <p><b>3' SEOOW-18/3 Cord</b></p>	CAB	39.4"	0.21 lbs.
 <p><b>Cable Gland</b></p>	CGL	1.46" x 1.73"	0.06 lbs.
 <p><b>10KV Surge Protector</b></p> <p>* Standard</p>	SP10U 10KV (100-277V)	4.18" x 0.91" x 0.51" Without Wire	0.09 lbs.
	SP10N 10KV (347-480V)	4.33" x 0.99" x 0.71" Without Wire	0.11 lbs.
 <p><b>20KV Surge Protector</b></p>	SP20U 20KV (100-277V)	4.41" x 1.1" x 0.59" Without Wire	0.12 lbs.
	SP20N 20KV (347-480V)	4.33" x 1.18" x 0.71"	0.15 lbs.
 <p><b>Flush Ceiling Mount Kit</b></p>	FLM (1 pair)	3.74" x 3.15" x 0.95"	1.32 lbs.



An Avail Infrastructure Solutions Company

[availinfra.com/rig-a-lite](http://availinfra.com/rig-a-lite)

8500 Hansen Road  
Houston, TX 77075  
(713) 943-0340