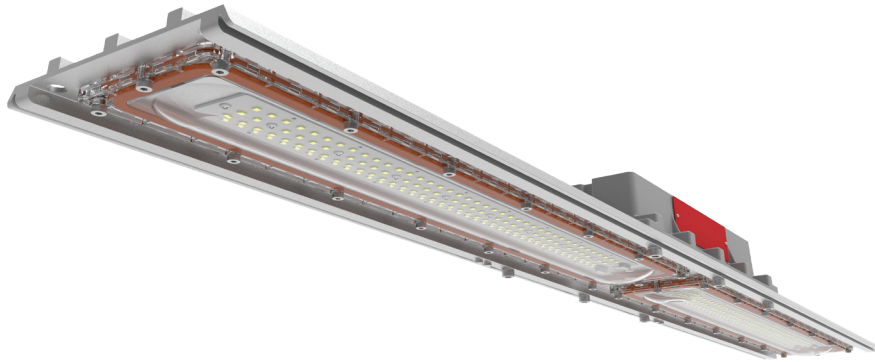


# EHLV LED

Hazardous-rated LED linear lighting  
for challenging environments



## E-SERIES

### Cost-effective, energy-efficient lighting for demanding environments

The RIG-A-LITE E-Series provides economical lighting solutions for industrial and hazardous applications, offering reliable performance and durability.

#### Classifications

- Class I, Division 2, Groups A, B, C, & D
- Class II, Division 1 & 2, Groups E, F & G
- Class III
- Class I, Zone 2, Group IIC
- Zone 21
- UL 844 Hazardous Locations
- UL 1598 Wet Locations
- UL 1598A Marine Outside Type
- UL 8750 LED Safety
- CSA C22.2 No. 137
- CSA C22.2 No. 141-15
- NEMA 4X
- IP67
- IK10
- 5G
- Resistant up to 2,000 PSI hose directed water
- Tested to 1000 hrs salt spray to standard ASTM" B117-11"



[availinfra.com/rig-a-lite](http://availinfra.com/rig-a-lite)

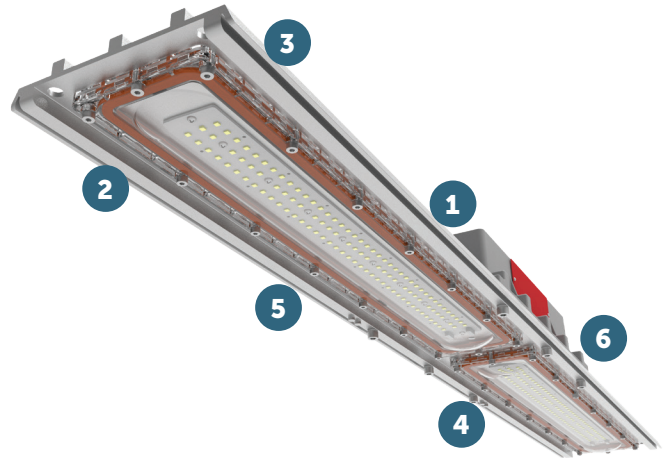
8500 Hansen Road  
Houston, TX 77075  
(713) 943-0340

# EHLV LED

## Hazardous-rated LED linear lighting for challenging environments

### Key Features

- 1** Low profile & Lighter - 100mm fixture height, perfect for mounting in confined or low height areas
- 2** Rugged Heat Sink - Superior thermal design provides outstanding performance from -40°C to 70°C
- 3** Simple Installation - Clamshell design allows easy access to drivers and multiple entries for through wiring
- 4** High Output - Two models from 5,100 to 13,600 lumens with up to 170Lm/W
- 5** Multiple Beam Angles - 30°, 60°, 90°, 110°, T2, T3, T4 lenses provide more choices for different scenarios
- 6** Emergency Battery Backup - 90-minute minimum running time at 8W in emergency mode



### Additional Features

- Universal voltage: AC120-277, 347-480V (50/60Hz)
- High efficacy up to 170lm/W
- Optional self-testing emergency battery backup
- Optics: 30° / 60° / 90° / 110° / T2 / T3 / T4
- CCT Adjustable (3000K/4000K/5000K)
- Wildlife-friendly amber color options
- 10kV surge protector is standard, 20kV optional
- 9 different mounting options
- Dimming: Standard 1-10VDC
- Ambient operating temperature -40°C to 70°C (standard model)  
-20°C to 50°C (emergency battery backup model)
- Lumen maintenance L70>150,000 @ 25°C
- 5-year warranty

### Standard Materials

#### Body:

Housing and splice box are die-cast copper-free aluminum with baked powder epoxy/polyester finish

#### Gaskets:

High temperature resistant silicone

#### Lens:

Heat, shock, impact, and UV resistant polycarbonate

#### Hardware:

Stainless Steel with lacquer-free nameplate

# EHLV LED

## Hazardous-rated LED linear lighting for challenging environments

### Catalog Number Logic



- 1**  
**BASIC LUMINAIRE**  
EHLV = N. American Standards
- 2**  
**LUMENS/WATTS**  
05 = 5,100 Lumens / 30 Watts (2 ft)  
07 = 6,800 Lumens / 40 Watts (2 ft)  
08 = 7,650 Lumens / 45 Watts (4 ft)  
10 = 10,200 Lumens / 60 Watts (4 ft)  
14 = 13,600 Lumens / 80 Watts (4 ft)
- 3**  
**VOLTAGE**  
U = 100-277V  
N = 347-480V
- 4**  
**PROTECTION LEVEL**  
2 = C1D2, C2D1
- 5**  
**OPTICS**  
30 = 30° Beam Angle  
60 = 60° Beam Angle  
90 = 90° Beam Angle  
110 = 110° Beam Angle  
T2 = Type II  
T3 = Type III  
T4 = Type IV
- 6**  
**COLOR TEMPERATURE**  
WW = 2700K (Warm white)  
SW = 3000K (Soft white)  
NW = 4000K (Neutral white)  
CW = 5000K (Cool white)  
AM = Amber  
AJC = Adjustable CCT  
(3000K/4000K/5000K)
- 7**  
**LENS**  
TPL = Transparent Polycarbonate  
FPL = Frosted Polycarbonate
- 8**  
**MOUNTING STYLE**  
PD = Pendant mount (3/4" NPT)  
FLM = Flush ceiling/wall mount  
OSM = Offset ceiling/wall swivel  
bracket  
HM = Hanging mount  
PCM48 = Pole clamp 48mm for  
pole 1-7/8"  
PCM60 = Pole clamp 60mm for  
pole 2-3/8"  
W90 = Wall mount 90°  
W25 = Wall mount 25°  
S90A = Stanchion-90° (1-1/4" NPT)  
S90B = Stanchion-90° (1-1/2" NPT)  
S25A = Stanchion-25° (1-1/4" NPT)  
S25B = Stanchion-25° (1-1/2" NPT)
- 9**  
**COLOR**  
GR = Gray
- 10**  
**OPTIONS**  
EMB = Emergency battery backup  
(-20°C ≤ Ta ≤ 50°C)  
SC2 = Safety cable  
SP10U = 10KV surge protector  
(100-277V) \* Standard  
SP10N = 10KV surge protector  
(347-480V) \* Standard  
SP20U = 20KV surge protector  
(100-277V)  
SP20N = 20KV surge protector  
(347-480V)  
CAB = 3' SEOOW-18/3 Cord  
CGL = Cable gland 3/4" NPT

# EHLV LED

## Hazardous-rated LED linear lighting for challenging environments

### Certification Guide

Model	Watts	Operating Voltage	Total Lumens <sup>1</sup>	Lumens per Watt <sup>1</sup>	CRI <sup>1</sup>	CCT <sup>1</sup>	Ambient Temperature <sup>1</sup>	Class I, Div. 2, Group A, B, C & D	Class II, Div. 1, Group E, F, G, Class III	Supply Wire Suitable Temperature, °C
EHLV05	30W	100-277V 50/60HZ	5100	170.0	70	4000K	-40°C < Tamb < 65°C	T5	T5	90°C
EHLV05	30W	100-277V 50/60HZ	5100	170.0	70	4000K	-40°C < Tamb < 70°C	T4A	-	90°C
EHLV07	40W	100-277V 50/60HZ	6800	170.0	70	4000K	-40°C < Tamb < 65°C	T5	T5	90°C
EHLV07	40W	100-277V 50/60HZ	6800	170.0	70	4000K	-40°C < Tamb < 70°C	T4A	-	90°C
EHLV08	45W	100-277V 50/60HZ	7650	170.0	70	4000K	-40°C < Tamb < 65°C	T5	T5	90°C
EHLV08	45W	100-277V 50/60HZ	7650	170.0	70	4000K	-40°C < Tamb < 70°C	T4A	-	90°C
EHLV10	60W	100-277V 50/60HZ, 347/480V 60HZ	10200	170.0	70	4000K	-40°C < Tamb < 65°C	T5	T5	90°C
EHLV10	60W	100-277V 50/60HZ, 347/480V 60HZ	10200	170.0	70	4000K	-40°C < Tamb < 70°C	T4A	-	90°C
EHLV14	80W	100-277V 50/60HZ, 347/480V 60HZ	13600	170.0	70	4000K	-40°C < Tamb < 65°C	T5	T5	90°C
EHLV14	80W	100-277V 50/60HZ, 347/480V 60HZ	13600	170.0	70	4000K	-40°C < Tamb < 70°C	T4A	-	90°C

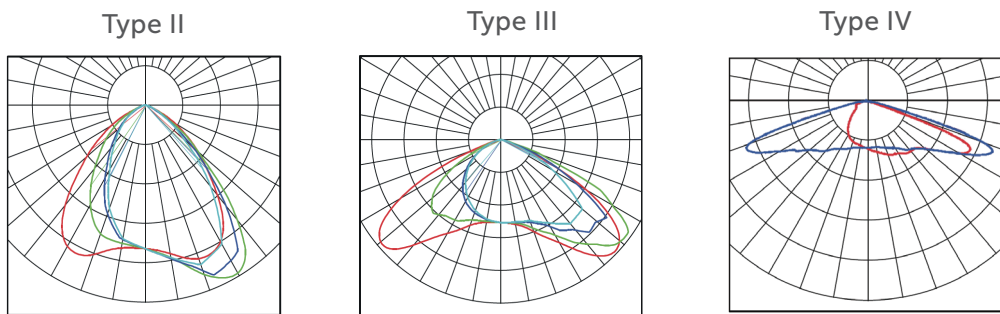
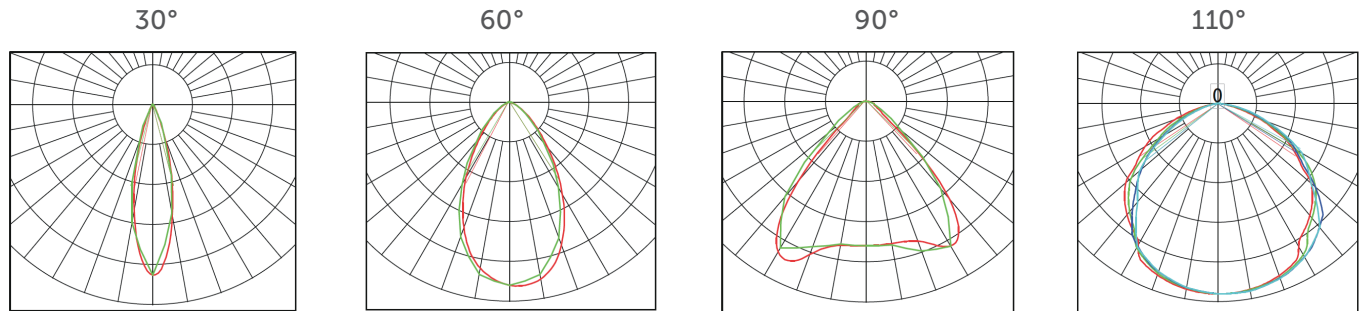
\* Ambient temperature of all EMB option models is  $-20^{\circ}\text{C} \leq T_{mb} \leq 50^{\circ}\text{C}$ .

1. When FPL or optics options are selected, total lumens, lumens per watt, CRI, CCT or ambient temperature may change. Consult factory for values.

# EHLV LED

Hazardous-rated LED linear lighting for challenging environments

## Photometric Data



# EHLV LED

## Hazardous-rated LED linear lighting for challenging environments

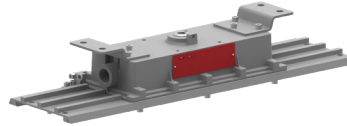
### Mounting Options

#### Pendant Mount: PD - 3/4" NPT



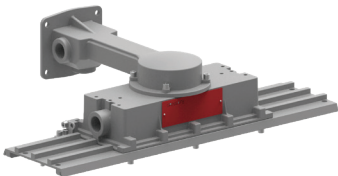
Fixture	Weight
EHLV05	10.14 lbs.
EHLV07	10.14 lbs.
EHLV08	14.99 lbs.
EHLV10	14.99 lbs.
EHLV14	14.99 lbs.

#### Flush Mount: FLM



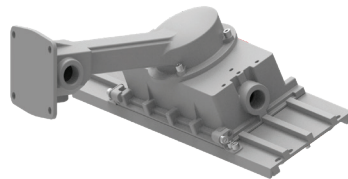
Fixture	Weight
EHLV05	11.46 lbs.
EHLV07	11.46 lbs.
EHLV08	16.31 lbs.
EHLV10	16.31 lbs.
EHLV14	16.31 lbs.

#### 90° Wall Mount: W90 - 3/4" NPT



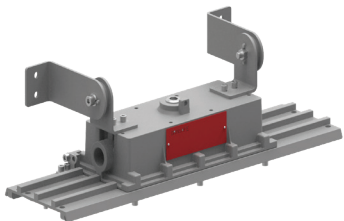
Fixture	Weight
EHLV05	13.23 lbs.
EHLV07	13.23 lbs.
EHLV08	16.63 lbs.
EHLV10	16.63 lbs.
EHLV14	16.63 lbs.

#### 25° Wall Mount: W25 - 3/4" NPT



Fixture	Weight
EHLV05	13.23 lbs.
EHLV07	13.23 lbs.
EHLV08	18.08 lbs.
EHLV10	18.08 lbs.
EHLV14	18.08 lbs.

#### Offset Ceiling/Wall Swivel Bracket: OSM



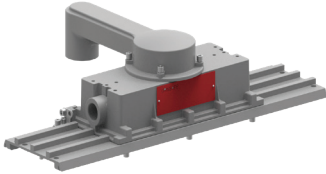
Fixture	Weight
EHLV05	12.34 lbs.
EHLV07	12.34 lbs.
EHLV08	17.19 lbs.
EHLV10	17.19 lbs.
EHLV14	17.19 lbs.

# EHLV LED

## Hazardous-rated LED linear lighting for challenging environments

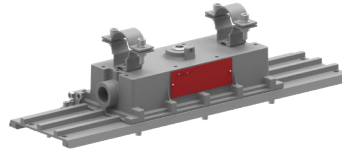
### Mounting Options (continued)

#### 90° Stanchion Mount: S90A - 1-1/4" / S90B - 1-1/2"



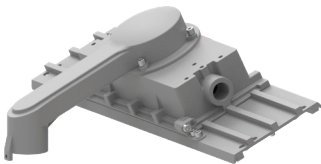
Fixture	Weight
EHLV05	12.13 lbs.
EHLV07	12.13 lbs.
EHLV08	16.98 lbs.
EHLV10	16.98 lbs.
EHLV14	16.98 lbs.

#### Pole Clamp Mount



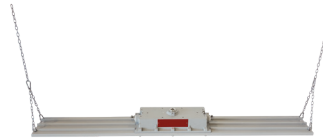
Fixture	Weight
EHLV05	10.96 lbs.
EHLV07	10.96 lbs.
EHLV08	15.81 lbs.
EHLV10	15.81 lbs.
EHLV14	15.81 lbs.

#### 25° Stanchion Mount: S25A - 1-1/4" / S25B - 1-1/2"



Fixture	Weight
EHLV05	12.13 lbs.
EHLV07	12.13 lbs.
EHLV08	16.98 lbs.
EHLV10	16.98 lbs.
EHLV14	16.98 lbs.

#### Hanging Mount













Fixture	Weight
EHLV05	10.38 lbs.
EHLV07	10.38 lbs.
EHLV08	15.23 lbs.
EHLV10	15.23 lbs.
EHLV14	15.23 lbs.

# EHLV LED

## Hazardous-rated LED linear lighting for challenging environments

### Accessories

	Catalog No.	Size (in.)	Shipping Weight (lbs.)
<b>Emergency Backup Battery</b> 	EMB	5.52" x 1.7" x 1.06" and 9.46" x 1.3" x 1.3"	0.66 lbs. 0.87 lbs.
<b>Stainless Steel Hanging Chain</b> 	HC (1 pair)	39.4"	0.24 lbs.
<b>Stainless Steel Safety Cable</b> 	SC1	39.4"	0.29 lbs.
<b>Flush Mount Kit</b> 	FLM (i pair)	3.74" x 3.15" x 0.95"	1.32 lbs.
<b>Offset Ceiling/Wall Swivel Bracket</b> 	OSM (1 pair)	5.24" x 4.49" x 2.68"	2.20 lbs.
<b>Pole Clamp Mount Kit</b> 	PCM (1 pair)	3.62" x 2.36" x 1.3"	0.82 lbs.

	Catalog No.	Size (in.)	Shipping Weight (lbs.)
<b>3' SEOOW-18/3 Cord</b> 	CAB	39.4"	0.21 lbs.
<b>Cable Gland</b> 	CGL	1.46" x 1.73"	0.06 lbs.
<b>10KV Surge Protector</b>  * Standard	SP10U 10KV (100-277V)	4.18" x 0.91" x 0.51" Without Wire	0.09 lbs.
	SP10N 10KV (347-480V)	4.18" x 0.91" x 0.51" Without Wire	0.09 lbs.
<b>20KV Surge Protector</b> 	SP20U 20KV (100-277V)	4.41" x 1.1" x 0.59" Without Wire	0.12 lbs.
	SP20N 20KV (347-480V)	4.41" x 1.1" x 0.59" Without Wire	0.12 lbs.



An Avail Infrastructure Solutions Company

[availinfra.com/rig-a-lite](http://availinfra.com/rig-a-lite)

8500 Hansen Road  
Houston, TX 77075  
(713) 943-0340