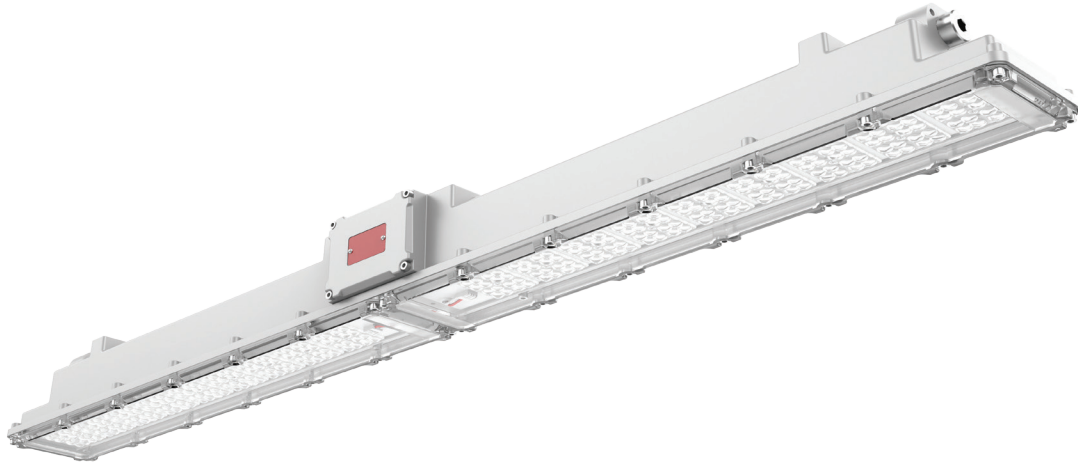


# EXA06 LED

Explosion-proof LED linear luminaire for hazardous-rated locations

**RIG-A-LITE™**  
An Avail Infrastructure Solutions Company



## EX-SERIES

### Globally certified protection for hazardous environments

The RIG-A-LITE EX-Series meets IECEx and ATEX standards, providing compliance, durability, and safety for hazardous locations. Designed for the Middle East, North Africa, Southeast Asia, and other ATEX/IECEx-certified regions, the EX-Series delivers reliable performance in extreme conditions.

### Classifications

- Class I, Division 2, Groups A, B, C, & D
- Class II, Division 2, Groups F & G
- Class III
- UL 1598A Marine Outside Type
- IK08
- IP66

### IECEx

- Ex nR IIC T6/T5 Gc
- Ex tb IIIC T80 C/ T95 C Db IP66

### ATEX

- II 3G Ex nR IIC T6/T5 Gc
- II 2D Ex tb IIIC T80 C/ T95 C Db IP66



[availinfra.com/rig-a-lite](http://availinfra.com/rig-a-lite)

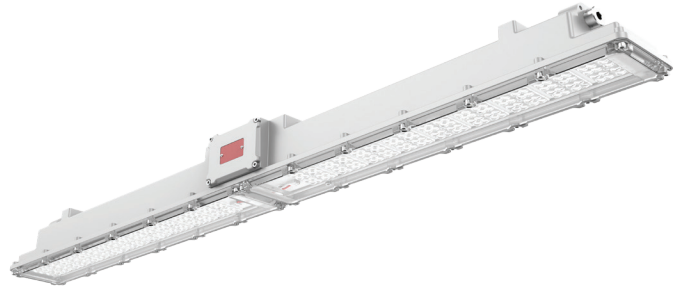
8500 Hansen Road  
Houston, TX 77075  
(713) 943-0340

# EXA06 LED

## Explosion-proof LED linear luminaire for hazardous-rated locations

### Key Features

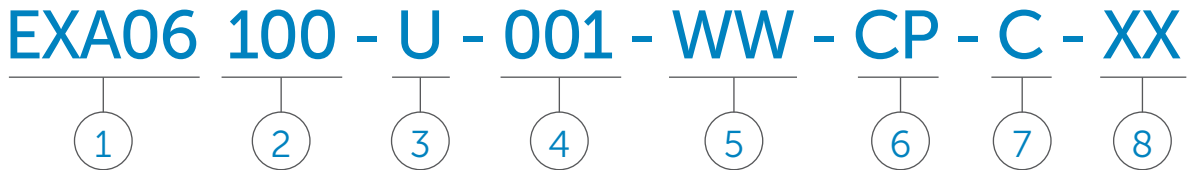
- Available in 20W, 30W, 40W, 50W, 60W, 70W, 80W, 100W
- Warm white/cool white color and colored R/G/B/Amber options
- Various installation methods are available to meet different application demands
- Type I, III, and V light distribution options
- End cable entry M25x1.5, M20x1.5, M32x1.5, 3/4" NPT, 1/2" NPT, and 1" NPT
- Three conduit holes are reserved for interconnection of fixtures, greatly facilitating onsite installation and wiring
- Made of fiber-reinforced plastic, offering superior corrosion resistance for marine use
- Clear or diffused lens optional, 14 optic lenses for different light design requirements
- Provides up to 20W illumination for 90 minutes or 10W illumination for 3 hours of emergency lighting



# EXA06 LED

Explosion-proof LED linear luminaire for hazardous-rated locations

## Catalog Number Logic



### 1

#### BASIC LUMINAIRE

EXA06 = ATEX & IECEx Standards

### 2

#### LUMENS/WATTS

020 = 3,200 Lumens / 20 Watts  
030 = 4,800 Lumens / 30 Watts  
040 = 6,400 Lumens / 40 Watts  
050 = 8,000 Lumens / 50 Watts  
060 = 9,600 Lumens / 60 Watts  
070 = 11,200 Lumens / 70 Watts  
080 = 12,800 Lumens / 80 Watts  
100 = 16,000 Lumens / 100 Watts

### 3

#### VOLTAGE

U = 100-277V 50/60HZ  
V = 277-480V 50/60HZ

### 4

#### OPTICS

001 = 10° Beam angle  
002 = 51° Beam angle  
003 = 17° Beam angle  
004 = 30° Beam angle  
005 = 55° Beam angle  
006 = 85° Beam angle  
007 = 45° Beam angle  
008 = 60° Beam angle  
009 = 39° Beam angle  
010 = 57° Beam angle  
011 = 146° Beam angle  
012 = 56° Beam angle

### 5

#### COLOR TEMPERATURE

WW = 2000K (Warm white)  
SW = 3000K (Soft white)  
NW = 4000K (Natural white)  
CW = 5000K (Cool white)  
CD = 6500K (Cool daylight)  
RE = Red  
GR = Green  
BL = Blue  
AM = Amber

### 6

#### LENS

CP = Clear Polycarbonate  
DP = Diffused Polycarbonate

### 7

#### MOUNTING STYLE

P = Pendant mount  
T = Trunnion mount  
C = Ceiling mount  
L = Loop mount  
H = Hoop mount  
R = Recessed mount

### 8

#### OPTIONS

EM = Emergency battery  
DM = Dimmable  
ED = Emergency battery & dimmable

# EXA06 LED

## Explosion-proof LED linear luminaire for hazardous-rated locations

### Certification Guide

Model	Watts	Operating Voltage	Total Lumens <sup>1</sup>	Lumens per Watt <sup>1</sup>	CRI <sup>1</sup>	CCT <sup>1</sup>	Ambient Temperature <sup>1</sup>	Gas ExnR	Dust Extb	Supply Wire Suitable Temperature, °C
EXA06-020	20W	120-277V 50/60HZ, 277-480V 60HZ	3200	160.0	70	5000K	-40°C < Tamb < 55°C	T6	80°C	90°C
EXA06-020-EM	20W	120-277V 50/60HZ	3200	160.0	70	5000K	0°C < Tamb < 55°C	T6	80°C	90°C
EXA06-030	30W	120-277V 50/60HZ, 277-480V 60HZ	4800	160.0	70	5000K	-40°C < Tamb < 55°C	T6	80°C	90°C
EXA06-030-EM	30W	120-277V 50/60HZ	4800	160.0	70	5000K	0°C < Tamb < 55°C	T6	80°C	90°C
EXA06-040	40W	120-277V 50/60HZ, 277-480V 60HZ	6400	160.0	70	5000K	-40°C < Tamb < 55°C	T6	80°C	90°C
EXA06-040-EM	40W	120-277V 50/60HZ	6400	160.0	70	5000K	0°C < Tamb < 55°C	T6	80°C	90°C
EXA06-050	50W	120-277V 50/60HZ, 277-480V 60HZ	8000	160.0	70	5000K	-40°C < Tamb < 45°C	T6	80°C	90°C
EXA06-050-EM	50W	120-277V 50/60HZ	8000	160.0	70	5000K	0°C < Tamb < 45°C	T6	80°C	90°C
EXA06-060	60W	120-277V 50/60HZ, 277-480V 60HZ	9600	160.0	70	5000K	-40°C < Tamb < 55°C	T6	80°C	90°C
EXA06-060-EM	60W	120-277V 50/60HZ	9600	160.0	70	5000K	0°C < Tamb < 55°C	T6	80°C	90°C
EXA06-070	70W	120-277V 50/60HZ, 277-480V 60HZ	11200	160.0	70	5000K	-40°C < Tamb < 55°C	T6	80°C	90°C
EXA06-070-EM	70W	120-277V 50/60HZ	11200	160.0	70	5000K	0°C < Tamb < 55°C	T6	80°C	90°C
EXA06-080	80W	120-277V 50/60HZ, 277-480V 60HZ	12800	160.0	70	5000K	-40°C < Tamb < 55°C	T6	80°C	90°C
EXA06-080-EM	80W	120-277V 50/60HZ	12800	160.0	70	5000K	0°C < Tamb < 55°C	T6	80°C	90°C
EXA06-100	100W	120-277V 50/60HZ, 277-480V 60HZ	16000	160.0	70	5000K	-40°C < Tamb < 40°C	T6	80°C	90°C
EXA06-100-EM	100W	120-277V 50/60HZ	16000	160.0	70	5000K	0°C < Tamb < 40°C	T6	80°C	90°C

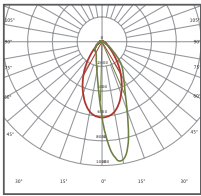
<sup>1</sup> When GS, WG, color LEDs or optics options are selected, total lumens, lumens per watt, CRI, CCT, or ambient temperature may change. Consult factory for values.

# EXA06 LED

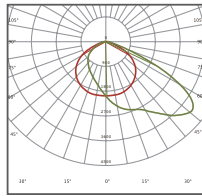
## Explosion-proof LED linear luminaire for hazardous-rated locations

### Photometric Data

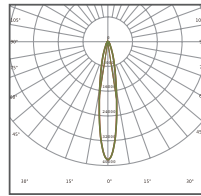
10°



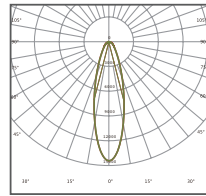
51°



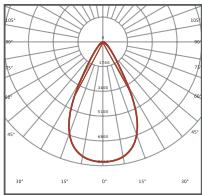
17°



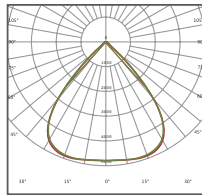
30°



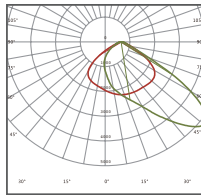
55°



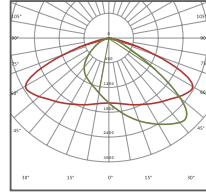
85°



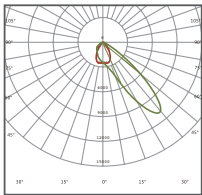
45°



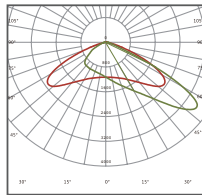
60°



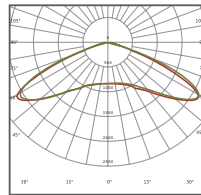
39°



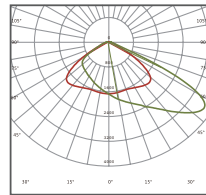
57°



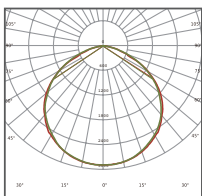
146°



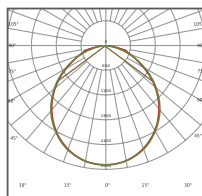
56°



No Lens/CP



No Lens/DP

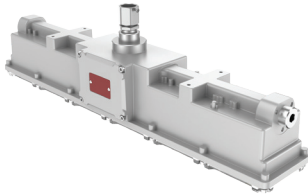


# EXA06 LED

Explosion-proof LED linear luminaire for hazardous-rated locations

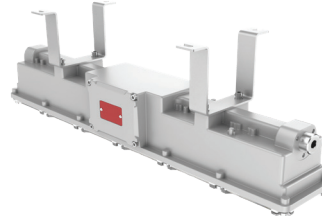
## Mounting Options

### Pendant Mount: P



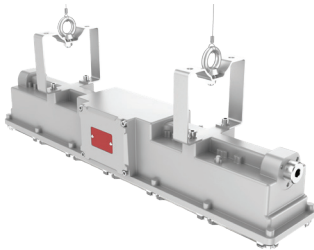
Fixture	Weight
EXA06-020	7.26 lbs.
EXA06-030	7.26 lbs.
EXA06-040	7.26 lbs.
EXA06-050	7.26 lbs.
EXA06-060	10.78 lbs.
EXA06-070	10.78 lbs.
EXA06-080	10.78 lbs.
EXA06-100	10.78 lbs.

### Ceiling Mount: C



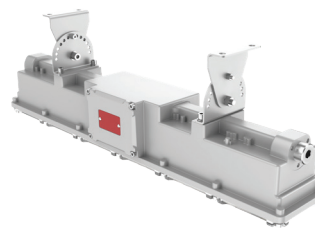
Fixture	Weight
EXA06-020	7.48 lbs.
EXA06-030	7.48 lbs.
EXA06-040	7.48 lbs.
EXA06-050	7.48 lbs.
EXA06-060	11 lbs.
EXA06-070	11 lbs.
EXA06-080	11 lbs.
EXA06-100	11 lbs.

### Loop Mount: L



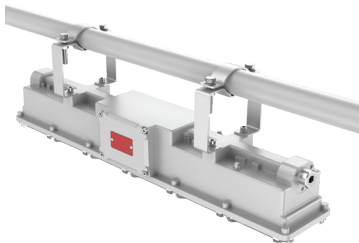
Fixture	Weight
EXA06-020	7.48 lbs.
EXA06-030	7.48 lbs.
EXA06-040	7.48 lbs.
EXA06-050	7.48 lbs.
EXA06-060	11 lbs.
EXA06-070	11 lbs.
EXA06-080	11 lbs.
EXA06-100	11 lbs.

### Trunnion Mount: T



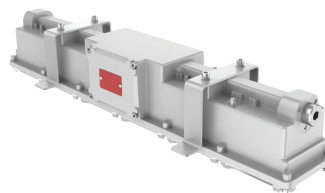
Fixture	Weight
EXA06-020	7.7 lbs.
EXA06-030	7.7 lbs.
EXA06-040	7.7 lbs.
EXA06-050	7.7 lbs.
EXA06-060	11.22 lbs.
EXA06-070	11.22 lbs.
EXA06-080	11.22 lbs.
EXA06-100	11.22 lbs.

### Hoop Mount: H



Fixture	Weight
EXA06-020	7.7 lbs.
EXA06-030	7.7 lbs.
EXA06-040	7.7 lbs.
EXA06-050	7.7 lbs.
EXA06-060	11.22 lbs.
EXA06-070	11.22 lbs.
EXA06-080	11.22 lbs.
EXA06-100	11.22 lbs.

### Recessed Mount: R



Fixture	Weight
EXA06-020	7.48 lbs.
EXA06-030	7.48 lbs.
EXA06-040	7.48 lbs.
EXA06-050	7.48 lbs.
EXA06-060	11 lbs.
EXA06-070	11 lbs.
EXA06-080	11 lbs.
EXA06-100	11 lbs.



An Avail Infrastructure Solutions Company

[availinfra.com/rig-a-lite](http://availinfra.com/rig-a-lite)

8500 Hansen Road  
Houston, TX 77075  
(713) 943-0340