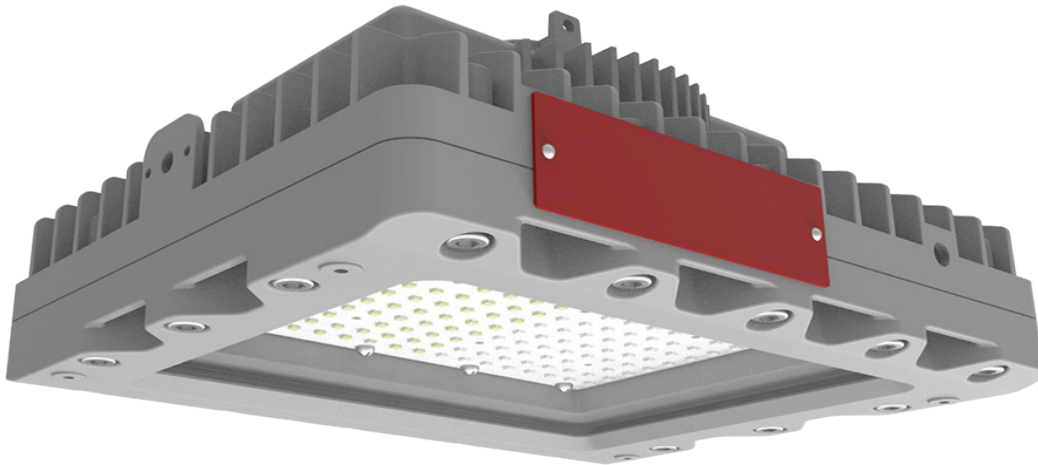


EHSM LED

Explosion proof LED low-bay area lighting for hazardous-rated environments

RIG-A-LITE™
An Avail Infrastructure Solutions Company



E-SERIES

Cost-effective, energy-efficient lighting for demanding environments

The RIG-A-LITE E-Series provides economical lighting solutions for industrial and hazardous applications, offering reliable performance and durability.

Classifications

- Class I, Division 1, Groups B, C & D
- Class I, Division 2, Groups A, B, C, & D
- Class II, Divisions 1 & 2, Groups E, F & G
- Class III
- Class I, Zone 1, Group IIB+H2
- Class I, Zone 2, Group IIC
- Zone 21, Zone 22
- UL 844 Hazardous Locations
- UL 1598 Wet Locations
- UL 1598A Marine Outside Type
- UL 8750 LED Safety
- CSA C22.2 No. 137-M1981
- CSA C22.2 No. 250.0
- NEMA 4X
- IP67
- IK09
- 5G
- Tested to 1000 hrs salt spray to standard ASTM "B117-11"



availinfra.com/rig-a-lite

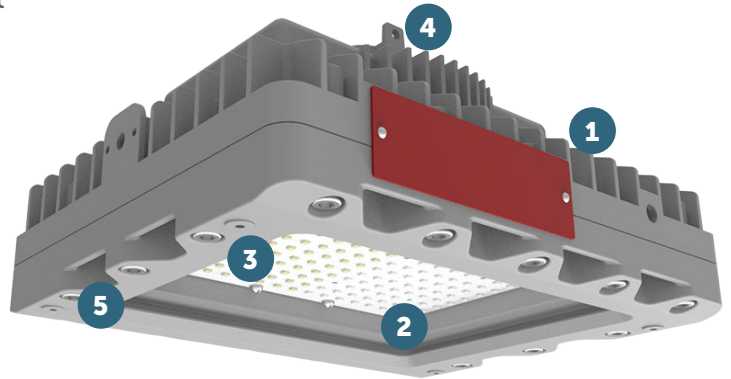
8500 Hansen Road
Houston, TX 77075
(713) 943-0340

EHSM LED

Explosion proof LED low-bay area lighting for hazardous-rated environments

Key Features

- 1** Lightweight and Compact - Low profile & lightweight with single chamber design
- 2** High efficiency - Delivers up to 160lm/W utilizing specially-treated glass for extreme application
- 3** Multiple Beam Angles - 35°, 60°, 90°, 110°, T2, T3, T4 lenses provide more choices for various scenarios
- 4** Retrofit Friendly - Universal mounting accessories minimize the SKUs and maximize the flexibility
- 5** Built to Last - Copper-free aluminum housing and impact resistant lens provide ingress protection



Additional Features

- Universal voltage: AC120-277, 347-480V (50/60Hz)
- Optional self-testing emergency battery backup
- High efficacy up to 160lm/W
- Optics: 30° / 60° / 90° / 110° / T1 / T3 / T4
- 10kV surge protector is standard, 20kV optional
- Dimming: Standard 1-10VDC
- T-rating of T6
- Ambient operating temperature -40°C to 65°C
- Lumen maintenance 150,000 @ L70
- 5-year warranty

Standard Materials

Body:

Housing, heat sink, and adapter are die-cast aluminum with baked powder epoxy/polyester finish

Gaskets:

High temperature resistant silicone

Lens:

Heat, shock, and impact resistant glass

Hardware:

Stainless Steel with lacquer-free nameplate

EHSM LED

Explosion proof LED low-bay area lighting for hazardous-rated environments

Catalog Number Logic

EHSM 10 - U - 2 - 30 - WW - TG - TB5 - GR - XX

1

2

3

4

5

6

7

8

9

10

1

BASIC LUMINAIRE

EHSM = N. American Standards

2

LUMENS/WATTS

03 = 3,200 Lumens / 20 Watts

06 = 6,400 Lumens / 40 Watts

10 = 9,600 Lumens / 60 Watts

3

VOLTAGE

U = 100-277V 50/60HZ

N = 347-480V 60HZ

4

EXPLOSION-PROOF LEVEL

1 = C1D1, C2D1

2 = C1D2, C2D1

5

OPTICS

30 = 30°

60 = 60°

90 = 90°

110 = 110°

T2 = Type II

T3 = Type III

T4 = Type IV

6

COLOR TEMPERATURE

WW = 2700K (Warm white)

SW = 3000K (Soft white)

NW = 4000K (Neutral white)

CW = 5000K (Cool white)

AM = Amber

7

LENS

TG = Transparent Glass

FG = Frosted Glass

8

MOUNTING STYLE

PD = Pendant mount (3/4" NPT)

TB2 = Trunion bracket (3/4" NPT)

CJB = Ceiling junction box

W90 = Wall mount 90°

W25 = Wall mount 25°

PS = Pole stanchion

S90A = Stanchion-90° (1-1/4" NPT)

S90B = Stanchion-90° (1-1/2" NPT)

S25A = Stanchion-25° (1-1/4" NPT)

S25B = Stanchion-25° (1-1/2" NPT)

9

COLOR

GR = Gray

10

OPTIONS

WGS2 = Wire guard

SC2 = Safety cable

VS2 = Dark sky visor

SP10U = 10KV surge protector
(100-277V) * Standard

SP10N = 10KV surge protector
(347-480V) * Standard

SP20U = 20KV surge protector
(100-277V)

SP20N = 20KV surge protector
(347-480V)

PBC48 = Pipe clamp (M8*48mm) for pole
1-7/8" (48mm)

PBC60 = Pipe clamp (M8*60mm) for pole
2-3/8" (60mm)

PS = Pole stanchion 2-3/8" (60mm)

EHSM LED

Explosion proof LED low-bay area lighting for hazardous-rated environments

Certification Guide

Model	Watts	Operating Voltage	Total Lumens ¹	Lumens per Watt ¹	CRI ¹	CCT ¹	Ambient Temperature ^{1,2}	Class I, Div. 1, Group C & D	Class I, Div. 2, Group A, B, C & D	Class II, Div. 1, Group E, F, G, Class III	Supply Wire Suitable Temperature, °C
EHSM03	20W	100-277V 50/60HZ	3200	160.0	70	5000K	-40°C < Tamb < 65°C	T6	T4A	T4A	90°C
EHSM06	40W	100-277V 50/60HZ	6400	160.0	70	5000K	-40°C < Tamb < 65°C	T6	T4A	T4A	90°C
EHSM10	60W	100-277V 50/60HZ, 347/480V 60HZ	9600	160.0	70	5000K	-40°C < Tamb < 65°C	T6	T4A	T4A	90°C

1. When FG or optics options are selected, total lumens, lumens per watt, CRI, CCT or ambient temperature may change. Consult factory for values.

EHSM LED

Explosion proof LED low-bay area lighting for hazardous-rated environments

Photometric Data

