

# FPF 2 Series

Non-metallic fixture  
for food processing

 **RIG-A-LITE™**  
An Avail Infrastructure Solutions Company



## Classifications

- NSF Certified Food Equipment
- High Pressure Hose Down
- UL 1598A Wet Locations
- Non-Metallic LED Fixture
- CUL

[availinfra.com/rig-a-lite](http://availinfra.com/rig-a-lite)

8500 Hansen Road  
Houston, TX 77075  
(713) 943-0340

# FPF 2 Series

## Non-metallic fixture for food processing

### Key Features

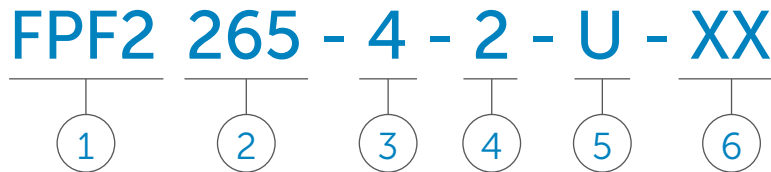
- 1 Stainless steel external hardware
  - 2 Industry leading watershed design
  - 3 Fixed mount and chain mount options
  - 4 Polycarbonate end caps standard (stainless steel available)
  - 5 Impact resistant acrylic housing
- Indoor or outdoor use
  - High pressure hose down
  - Emergency option available



# FPF 2 Series

## Non-metallic fixture for food processing

### Catalog Number Logic



#### 1

##### BASIC SERIES

FPF2 Non Metallic Fluorescent Fixture  
UL 1598 Wet Locations  
CUL  
NSF Certified Food Equipment

#### 2

##### LAMP WATTAGE

265 = 265mA, 59 or 32 Watt (T8 Lamps)

#### 3

##### NOMINAL FIXTURE LENGTH

2 = 2 Foot  
4 = 4 Foot  
8 = 8 Foot

#### 4

##### NUMBER OF LAMPS

2 = 2 Lamp  
4 = 4 Lamp (8 ft. Only)

#### 5

##### VOLTAGE/FREQUENCY

H = 347V 60 HZ<sup>1</sup>  
U = 120 thru 277V 50/60 HZ

#### 6

##### OPTIONS<sup>2</sup>

AL95 = 95% Premium Specular Reflector  
F = Single Fuse  
HL = Hi-Lumen Ballast (T8 Only)  
L = Lamps  
LC = Coated Lamps  
SS = Stainless Steel End Caps  
EON = Emergency Only  
ENN = Emergency & Normal  
ENS = Emergency & Normal Switched

<sup>1</sup> Fixtures are furnished with FPFXDMKT, non-metallic cord grip and 3 ft. long #16 AWG 3 conductor type SOA cable.

<sup>2</sup> Consult factory for pricing.

Catalog logic is for explaining catalog number structure only. Not all combinations are possible; consult factory for catalog numbers not listed in charts.

# FPF 2 Series

## Non-metallic fixture for food processing

### Fluorescent Series



#### Features

- UL 1598 Wet Locations
- CUL
- NSF Certified Food Equipment
- Non-metallic housing
- Aluminum reflector and ballast cover
- External stainless steel hardware
- Suitable for high pressure hose down
- Suitable for indoor or outdoor
- Optional stainless steel end caps available

### Fluorescent Emergency Series



#### Features

- Emergency illumination meets OSHA, Life Safety Code (NFPA 101), and National Electric Code (NFPA 70) requirements
- Switched or non-switched applications
- Provides 1100-1200 lumens of initial light output in emergency mode
- Provides at least 90 minutes of illumination in emergency mode
- Sealed, maintenance-free nickel cadmium batteries with a life expectancy of 7-10 years
- Self Contained unitized construction
- Easily identified as an emergency lighting fixture
- Charging indicator LED pilot light
- Battery cut-off switch is standard
- NSF Certified Food Equipment

*With emergency option, red polycarbonate endcaps are furnished.*

*For fixtures with stainless steel endcaps, emergency labels are installed on each side in the center, clearly visible through the acrylic housing.*

# FPF 2 Series

## Non-metallic fixture for food processing

### Fluorescent Series

(Lamps not included)	Description	Voltage	Catalog Number
Two Foot Fixture	17 Watt, Instant Start Medium Bi-Pin, T8 265mA Lamps, 24"	120-277V 50/60 HZ	FPF2265-2-2L-U
Four Foot Fixture	32 Watt, Instant Start Medium Bi-Pin, T8 265mA Lamps, 48"	120-277V 50/60 HZ	FPF2265-4-2L-U
Eight Foot Fixture	32 Watt, Instant Start Medium Bi-Pin, T8 265mA Lamps, 48"	120-277V 50/60 HZ	FPF2265-8-4L-U
	59 Watt, Rapid Start Slimline, T8 Single Pin 265mA Lamps, 96"	120-277V 50/60 HZ	FPF2265-8-2L-U

Fixtures are furnished with stainless steel chain mount kit, non-metallic cord grip and 3 ft. long #16 AWG 3 conductor type SOA cable.

# FPF 2 Series

## Non-metallic fixture for food processing

### Fluorescent Emergency Series

(Lamps not included)

Fixture Type	Circuit Type	Nominal Fixture Length	Description	Voltage	Catalog Number
Emergency Only Operation	Non-Switched ①	Two Foot 2 Lamp Fixture	17 Watt, Instant Start, Medium Bi-Pin, T8 265mA Lamps, 24"	120-277V 50/60 HZ	FPF2265-2-2L-U-EON
		Four Foot 2 Lamp Fixture	32 Watt, Instant Start, Medium Bi-Pin, T8 265mA Lamps, 48"	120-277V 50/60 HZ	FPF2265-4-2L-U-EON
Emergency and Normal Operation	Non-Switched ①	Four Foot 2 Lamp Fixture	32 Watt, Instant Start, Medium Bi-Pin, T8 265mA Lamps, 48"	120-277V 50/60 HZ	FPF2265-4-2L-U-ENN
		Eight Foot 2 Lamp Fixture	59 Watt, Rapid Start, Slimline Single Pin, T8 265mA Lamps, 96"	120-277V 50/60 HZ	FPF2265-8-2L-U-ENN
		Eight Foot 4 Lamp Fixture	32 Watt, Instant Start, Medium Bi-Pin, T8 265mA Lamps, 48"	120-277V 50/60 HZ	FPF2265-8-4L-U-ENN
	Switched ②	Four Foot 2 Lamp Fixture	32 Watt, Instant Start, Medium Bi-Pin, T8 265mA Lamps, 48"	120-277V 50/60 HZ	FPF2265-4-2L-U-ENS
		Eight Foot 2 Lamp Fixture	59 Watt, Rapid Start, Slimline Single Pin, T8 265mA Lamps, 96"	120-277V 50/60 HZ	FPF2265-8-2L-U-ENS
		Eight Foot 4 Lamp Fixture	32 Watt, Instant Start, Medium Bi-Pin, T8 265mA Lamps, 48"	120-277V 50/60 HZ	FPF2265-8-4L-U-ENS

① Non-Switched fixtures are furnished with stainless steel chain mount kit, non-metallic cord grip and 3 ft. long #16 AWG 3 conductor type SOA cable.

② Switched fixtures are furnished with stainless steel chain mount kit, non-metallic cord grip and 3 ft. long # 16 AWG 4 conductor type SOA cable.

# FPF 2 Series

## Non-metallic fixture for food processing

### Coefficients of Utilization

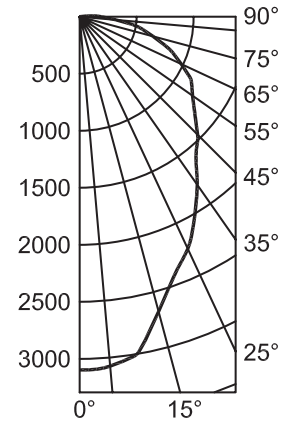
#### FPF226584L

% Effective Ceiling Cavity Reflectance rcc	80			50			10		
% Wall Reflectance rw	50	30	10	50	30	10	50	30	10
Room Cavity Ratio RCR	Effective Floor Cavity Reflectance 20%								
0	.77	.77	.77	.71	.71	.71	.66	.66	.66
1	.66	.63	.61	.62	.60	.58	.57	.56	.54
2	.58	.53	.49	.54	.51	.48	.50	.48	.45
3	.51	.45	.41	.48	.44	.40	.44	.41	.39
4	.45	.39	.35	.43	.38	.34	.40	.36	.33
5	.40	.35	.30	.38	.33	.30	.36	.32	.29
6	.36	.31	.27	.35	.30	.26	.33	.29	.26
7	.33	.28	.24	.32	.27	.23	.30	.26	.23
8	.30	.25	.21	.29	.24	.21	.28	.24	.21
9	.28	.23	.19	.27	.22	.19	.25	.22	.19
10	.26	.21	.17	.25	.20	.17	.24	.20	.17

### Candlepower Distribution

Deg.	Parl.	45	90
0	3097	3097	3097
5	3027	2943	3076
15	2954	2813	2677
25	2744	2412	2245
35	2412	2003	1799
45	1881	1539	1464
55	1423	1171	1209
65	794	869	985
75	405	572	666
85	91	271	320
90	48	157	189

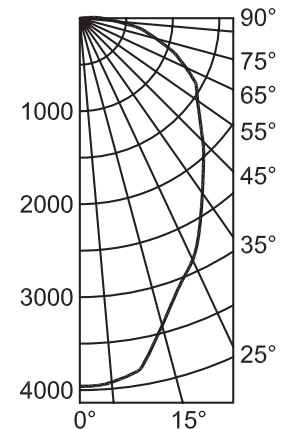
### Photometric Data



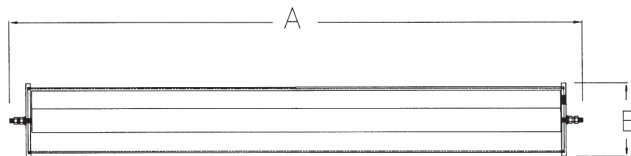
#### FPF2T5HO43

% Effective Ceiling Cavity Reflectance rcc	80			50			10		
% Wall Reflectance rw	50	30	10	50	30	10	50	30	10
Room Cavity Ratio RCR	Effective Floor Cavity Reflectance 20%								
0	.77	.77	.77	.72	.72	.72	.66	.66	.66
1	.67	.64	.61	.62	.60	.58	.57	.56	.55
2	.58	.53	.50	.54	.51	.48	.50	.48	.46
3	.51	.46	.41	.48	.44	.40	.45	.41	.39
4	.45	.40	.35	.43	.38	.34	.40	.36	.33
5	.41	.35	.30	.38	.34	.30	.36	.32	.29
6	.37	.31	.27	.35	.30	.26	.33	.29	.26
7	.33	.28	.24	.32	.27	.23	.30	.26	.23
8	.31	.25	.21	.29	.24	.21	.28	.24	.21
9	.28	.23	.19	.27	.22	.19	.26	.22	.19
10	.26	.21	.17	.25	.20	.17	.24	.20	.17

Deg.	Parl.	45	90
0	3958	3958	3958
5	3866	3760	3930
15	3775	3735	3815
25	3506	3082	2869
35	3082	2559	2298
45	2404	1967	1871
55	1819	1497	1545
65	1015	1110	1259
75	517	730	851
85	116	347	409
90	61	201	241



### Fixture Dimensions (inches)



FPF Series	Dimensions (inches)		Boxed Weight	Shipping Volume (Boxed Fixtures)
	A	B		
2 Foot Models	28.00	6.75	10 lbs.	1.2 cu. ft.
4 Foot Models	52.00	6.75	20 lbs.	2.1 cu. ft.
8 Foot Models	100.00	6.75	30 lbs.	4.0 cu. ft.

# FPF 2 Series

## Non-metallic fixture for food processing

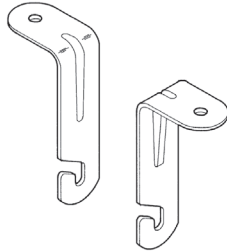
### Accessories

#### Fixed Mounting Bracket Kit

**Material:**  
Stainless Steel  
for 3/8 in. bolts (not provided)

**Catalog Number:**  
FPFXDMKT

**Shipping Weight:**  
0.4 lbs.



#### Chain Mounting Kit

**Material:**  
Stainless Steel

**Catalog Number:**  
FPFCMKT1

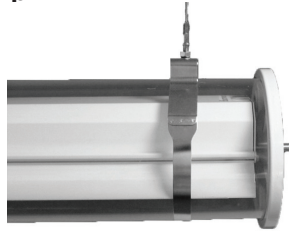
**Shipping Weight:**  
0.2 lbs.



#### Stainless Steel Band Clamp

**Catalog Number:**  
FPFBNDMKT

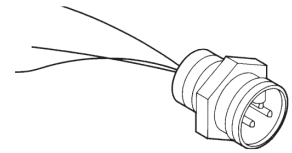
**Shipping Weight:**  
1.0 lbs.



#### Mini Receptacle 3P Male

**Catalog Number:**  
64005

**Shipping Weight:**  
0.1 lbs.



#### Pigtail Assembly - 3 ft. Cable

Other Lengths Available  
- Consult Factory

**Catalog Number:**  
53108

**Shipping Weight:**  
0.4 lbs.

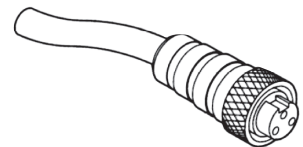


#### Mini Plug - 6 ft. Mini Cable

Other Lengths Available  
- Consult Factory

**Catalog Number:**  
60006

**Shipping Weight:**  
0.6 lbs.



#### Polycarbonate Endcap Kit

Includes All Gaskets Glued in Place

**Catalog Number:**  
53101

**Shipping Weight:**  
3 lbs.



#### Stainless Endcap Kit

Includes All Gaskets Glued in Place

**Catalog Number:**  
53101SS

**Shipping Weight:**  
2.5 lbs.



An Avail Infrastructure Solutions Company

[availinfra.com/rig-a-lite](http://availinfra.com/rig-a-lite)

8500 Hansen Road  
Houston, TX 77075  
(713) 943-0340