

EHRM LED

Hazardous-rated LED area lighting for challenging environments

RIG-A-LITE™
An Avail Infrastructure Solutions Company

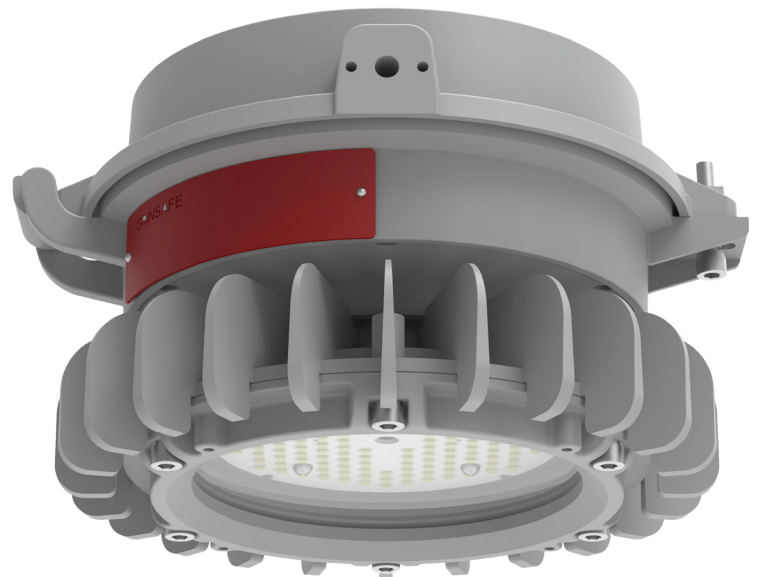
E-SERIES

Cost-effective, energy-efficient lighting for demanding environments

The RIG-A-LITE E-Series provides economical lighting solutions for industrial and hazardous applications, offering reliable performance and durability.

Classifications

- Class I, Division 2, Groups A, B, C, & D
- Class II, Division 1 & 2, Groups E, F & G
- Class III
- Class I, Zone 2, Group IIC
- Zone 21, Zone 22
- UL 844 Hazardous Locations
- UL 1598 Wet Locations
- UL 1598A Marine Outside Type
- UL 8750 LED Safety
- CSA C22.2 No. 137-M1981
- CSA C22.2 No. 250.0
- NEMA 4X
- IP67
- IK09
- 5G
- Resistant up to 2,000 PSI hose directed water
- Tested to 1000 hrs salt spray to standard ASTM B117-11"



availinfra.com/rig-a-lite

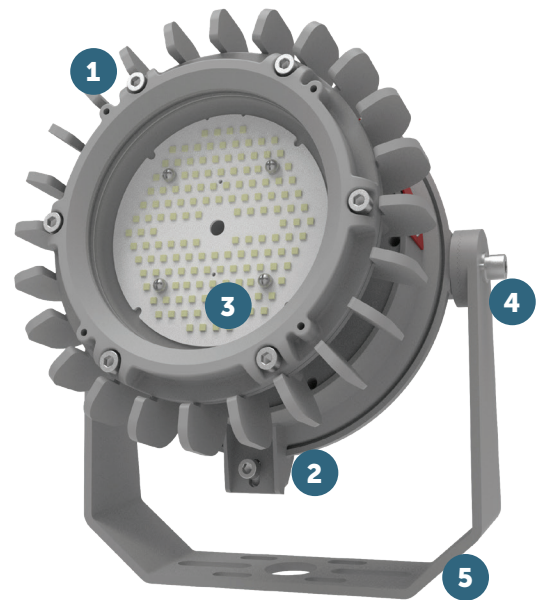
8500 Hansen Road
Houston, TX 77075
(713) 943-0340

EHRM LED

Hazardous-rated LED area lighting for challenging environments

Key Features

- 1 Easy Installation** - Single barrel nut and hinge design, one-hand operation for quick and easy installation
- 2 Lightweight & Compact** - 3.5kg fixture weight only, design for low mounting heights and confined spaces
- 3 High Efficiency** - Delivers up to 160lm/W and 9,600 lumens reducing energy costs by up to 75% over conventional lamps
- 4 Retrofit Friendly** - Universal mounting accessories minimizes the SKUs and maximizes the flexibility
- 5 Built to Last** - Copper-free aluminum housing and impact resistant lens are sealed from the outside environment



Additional Features

- Universal voltage: AC120-277, 347-480V (50/60Hz)
- High efficacy up to 160lm/W
- Optics: T1 / T3 / 110°
- CCT Adjustable (3000K/4000K/5000K)
- Wildlife-friendly amber color options
- 10kV surge protector is standard, 20kV optional
- Dimming: Standard 1-10VDC
- Ambient operating temperature -40°C to 60°C
- Lumen maintenance L70 > 150,000 hours @ 25°C
- 5-year warranty

Standard Materials

Body:

Housing, splice box, and adapter are die-cast copper-free aluminum with baked powder epoxy/polyester finish

Gaskets:

High temperature resistant silicone

Lens:

Heat, shock, and impact resistant glass or polycarbonate

Hardware:

Stainless Steel

EHRM LED

Hazardous-rated LED area lighting for challenging environments

Catalog Number Logic

EHRM 10 - U - 2 - T1 - WW - TG - PD - GR - XX

1

2

3

4

5

6

7

8

9

10

1

BASIC LUMINAIRE

EHRM = N. American Standards

2

LUMENS/WATTS

07 = 6,000 Lumens / 40 Watts

10 = 9,600 Lumens / 60 Watts

3

VOLTAGE

U = 100-277V

N = 347-480V

4

PROTECTION LEVEL

2 = C1D2, C2D1

5

OPTICS

110 = 110° Beam Angle

T1 = Type I

T3 = Type III

6

COLOR TEMPERATURE

WW = 2700K (Warm white)

SW = 3000K (Soft white)

NW = 4000K (Neutral white)

CW = 5000K (Cool white)

AM = Amber

AJC = Adjustable CCT
(3000K/4000K/5000K)

7

LENS

TG = Transparent Glass

FG = Frosted Glass

DFG = Frosted Drop Lens

TPL = Transparent Polycarbonate

FPL = Frosted Polycarbonate°

8

MOUNTING STYLE

PD1 = Pendant mount (3/4" NPT)

PD2 = Pendant mount (1" NPT)

TB4 = Trunnion bracket (3/4" NPT)

CJB = Ceiling junction box

W90 = Wall mount 90°

W25 = Wall mount 25°

S90A = Stanchion-90° (1-1/4" NPT)

S90B = Stanchion-90° (1-1/2" NPT)

S25A = Stanchion-25° (1-1/4" NPT)

S25B = Stanchion-25° (1-1/2" NPT)

9

COLOR

GR = Gray

10

OPTIONS

WGR3 = Wire guard for flat glass

WGR4 = Wire guard for drop lens

SC2 = Safety cable

VRM25 = Dark sky bolt-on visor 25°

VRM90 = Dark sky bolt-on visor 90°

SP10U = 10KV surge protector

(100-277V) * Standard

SP10N = 10KV surge protector

(347-480V) * Standard

SP20U = 20KV surge protector (100-277V)

SP20N = 20KV surge protector (347-480V)

PBC48 = Pipe clamp (M8*48mm)

for pole 1-7/8" (48mm) diameter

PBC60 = Pipe clamp (M8*60mm) for pole

2-3/8" (60mm) diameter

CAB = 3' SEOOW-18/3 cord

CGL = Cable gland 3/4" NPT

PS = Pole stanchion 2-3/8" (60mm)

EHRM LED

Hazardous-rated LED area lighting for challenging environments

Certification Guide

Model	Watts	Operating Voltage	Total Lumens ¹	Lumens per Watt ¹	CRI ¹	CCT ¹	Ambient Temperature ¹	Class I, Div. 2, Group A, B, C & D	Class II, Div. 1, Group E, F, G, Class III	Supply Wire Suitable Temperature, °C
EHRM07	40W	100-277V 50/60HZ	6000	150.0	70	5000K	-40°C < Tamb < 65°C	T4A	T5	90°C
EHRM10N	60W	347/480V 60HZ	9600	160.0	70	5000K	-40°C < Tamb < 65°C	T4	T5	90°C
EHRM10U	60W	100-277V 50/60HZ	9600	160.0	70	5000K	-40°C < Tamb < 65°C	T4A	T5	90°C

1. When frosted lenses or optics options are selected, total lumens, lumens per watt, CRI, CCT or ambient temperature may change. Consult factory for values.