

# MHLS LED

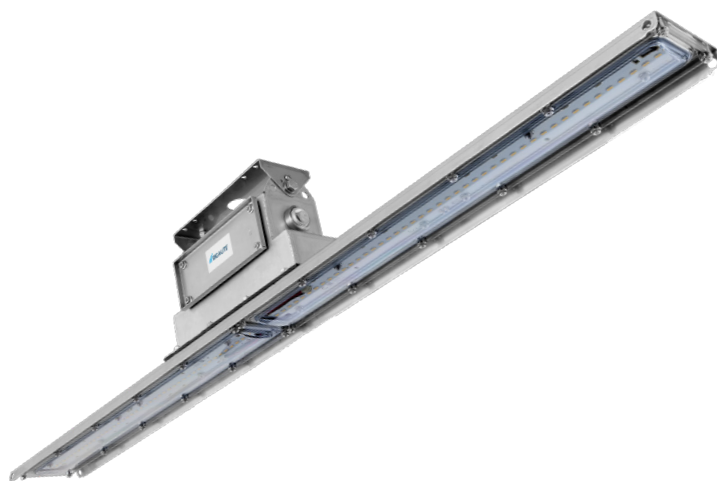
Stainless steel linear LED lighting for hazardous locations



## Key Features

- Low-profile, lightweight design
- Integral safety cable attachment points
- Toolless, cage-clamp terminal block
- Captive junction box cover, attached by nylon-coated stainless steel cable
- Field-replaceable LED circuit boards and drivers with quick disconnects
- Adjustable mounting bracket with 60° range-of-motion and nine locking positions\*
- Impact-resistant clear lens

\* Not included, must be ordered separately. Please see options section.



## Additional Features

- Central safety cable attachment points for increased safety/reduced range-of-motion
- Feed-through capable
- Optional end brackets for chain mount applications
- Emergency battery back-up
- Diffused lens option
- 10kV surge protection
- 5-year warranty

## Standard Materials

**Body:**  
Type 316 stainless steel

**Driver Body:**  
Type 316 stainless steel

**Gaskets:**  
One-piece Neoprene

**Optional End Brackets:**  
Stainless Steel

**Lens:**  
Polycarbonate

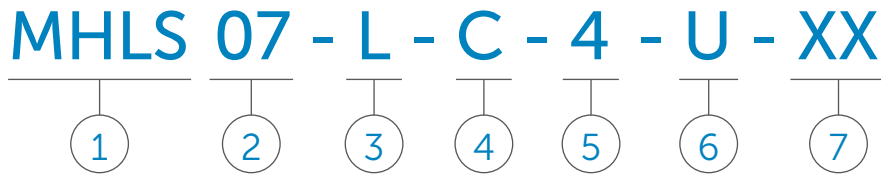
**Hardware:**  
Stainless Steel

## Classifications

- Class I, Division 2, Groups A, B, C and D
- Class II, Division 2, Groups F and G
- Class III
- Class I, Zone 2, Groups IIA, IIB, IIC, Zone 22 (ANSI/UL 844)
- UL 1598A marine outside type
- UL 1598 wet locations
- UL 8750 LED safety
- UL 844 hazardous locations
- UL 924 emergency lighting
- CSA C22.2 No. 250.0-08
- CSA C22.2 No. 137-M1981
- NEMA 4X
- IP66

## Certification Guide

Model	Length	Watts	Operating Voltage	Total Lumens	Lumens per Watt	CRI	CCT	Comparable Fluorescent Luminaire	Ambient Temperature	Class I, Div. 2, Group A, B, C, D	Class II, Div. 2, Group F & G Class III	Simultaneous Presence	Supply Wire Suitable Temp. °C
MHLS04LC2	2 ft	27W	120V - 277V 50/60 Hz, 347V/480V 60Hz	3620	133.5	83	4069	2X 24W T5H0 / 2 X 35W T12H0	T4A	T4A	T4A	T4A	90°C
MHLS05LC2	2 ft	37W		4833	129.7	83	4089	2X 54W T5H0 / 2 X 60W T12H0	T4A	T4A	T4A	T4A	90°C
MHLS06LC2	2 ft	39W		5550	141.8	83	4072	2X 24W T5H0 / 2 X 35W T12H0	T4	T4	T4	T4	90°C
MHLS07LC4	4 ft	52W		7261	140	83	4105	2X 54W T5H0 / 2 X 60W T12H0	T4A	T4A	T4A	T4A	90°C
MHLS09LC4	4 ft	72W		9757	136	83	4123	2X 54W T5H0 / 2 X 60W T12H0	T4A	T4A	T4A	T4A	90°C
MHLS11LC4	4 ft	77W		11252	147	83	4071	2X 54W T5H0 / 2 X 60W T12H0	T4	T4	T4	T4	90°C



**1**  
**SERIES**

MHLS LED<sup>1</sup>

**2**  
**LAMP WATTAGE**

- 04 = 27 Watt (2 foot)
- 05 = 37 Watt (2 foot)
- 06 = 40 Watt (2 foot)
- 07 = 52 Watt (4 foot)
- 09 = 72 Watt (4 foot)
- 11 = 77 Watt (4 foot)

**3**  
**LAMP TYPE**

L = LED (4000K CCT)

**4**  
**LENS**

- C = Clear
- D = Diffused

**5**  
**NOMINAL FIXTURE LENGTH**

- 2 = 2 Foot
- 4 = 4 Foot

**6**  
**VOLTAGE/FREQUENCY**

- U = 120 - 277V 50/60HZ
- A = 120V 60HZ<sup>2</sup>
- B = 220 - 240V 50/60HZ<sup>2</sup>
- C = 277V 60HZ<sup>2</sup>

**7**  
**OPTIONS**

- RIG = Mounting bracket and (2) safety cables
- MB = Mounting bracket ceiling or wall
- EB = End brackets cable or chain suspension
- EM = Emergency battery back-up
- FB = Fuse block
- SC = Safety cable
- 30 = 3000K CCT
- 35 = 3500K CCT
- 50 = 5000K CCT
- 316 = Type 316 Stainless steel



An Avail Infrastructure Solutions Company

[availinfra.com/rig-a-lite](http://availinfra.com/rig-a-lite)

1 Mounting hardware not included. Please see options for mounting selections.  
 2 Specify voltage when option FB is needed. When option FB is selected, one fuse is provided for 120 and 227V. Two fuses are provided for 220-240V. Fuse option not available for marine listed fixtures or for fixtures listed for use in Canada.